

Instructions for Installing & Setting up Simplify3D V3

V 3.0 of Simplify introduced several changes in how the software. This document will describe how to install it and get it working with your F306.

Step 1: Upgrade your Account

Simplify introduced a new license management system that makes it easier to see where your copies of Simplify are registered. You will need to create a user account and associate your license key with your email and user name.

Go to the Simplify3D [Upgrade Account](#) page and enter your licensee email address (the email that your license was emailed to) and your license key. You will be asked to confirm your email address, and then you will be able to access your Simplify3D Dashboard. You will find “Downloads” in the left hand menu.

For additional information see [this video](#).

Step 2: Download & Install

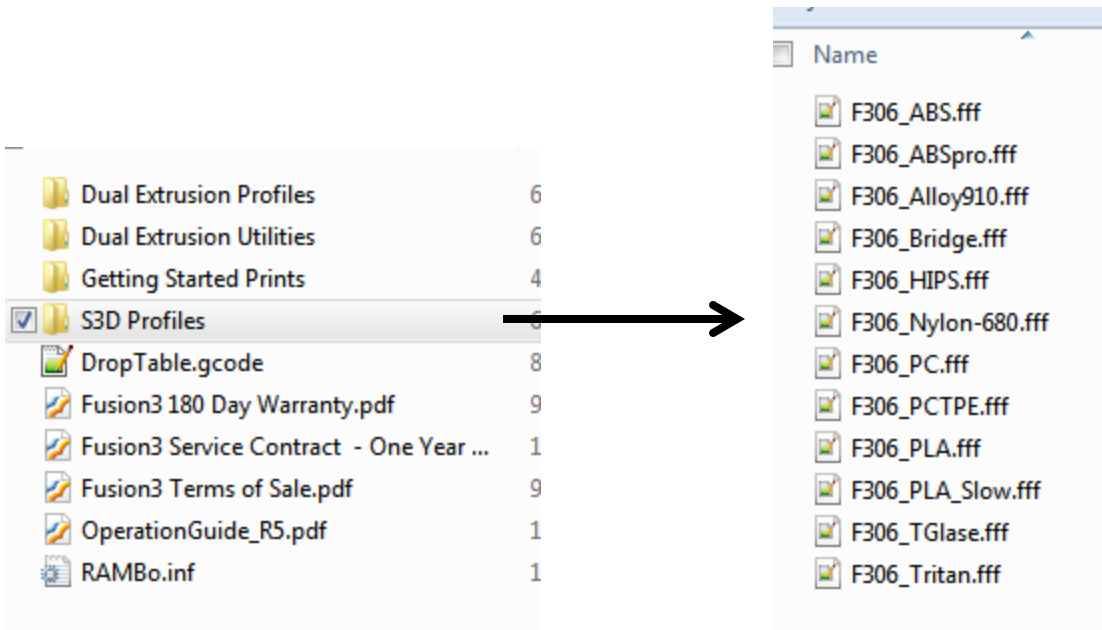
First, we recommend you uninstall any old versions of Simplify to avoid confusion.

Downloading and installing works the same: download the executable from your account page, and run it once it's finished downloading. The installation process is straightforward and remains the same.

Step 3: Copy Configuration Files to Hard Drive

You will also need to copy the configuration files (.FFF files) from your SD card to your hard drive. We recommend creating a folder in your “*My Documents*” folder for them.

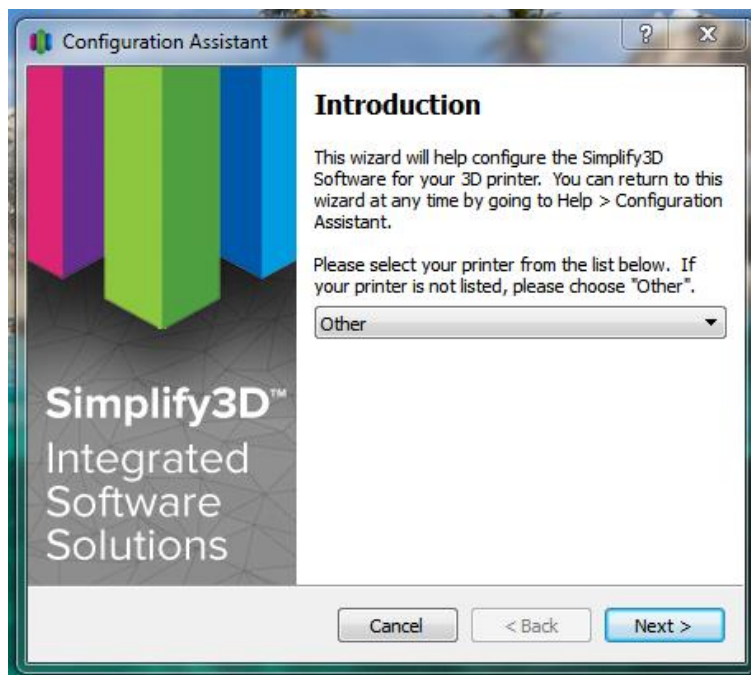
If you've downloaded them from our site you'll need to extract them from the zip file instead of copying them from the SD card.



Step 4: First Run & Setup

The first time you run the software it's going to prompt you for your user name and password. You will need to enter the credentials you created in step 1. The software will "phone home" to assign a license key to your installation. You will need to be connected to the internet for this first run.

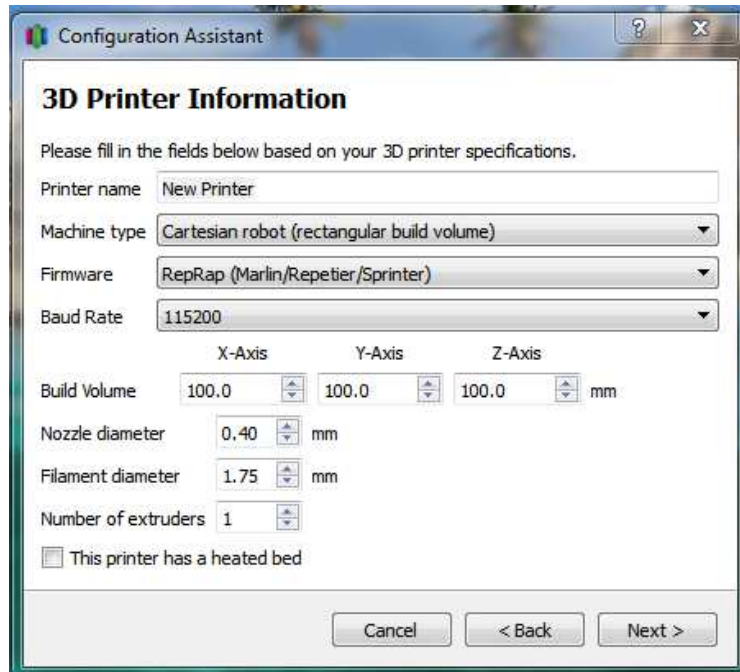
You'll then see a setup wizard similar to previous versions of Simplify.



On the introduction page, select "Other" in the drop-down as shown above.

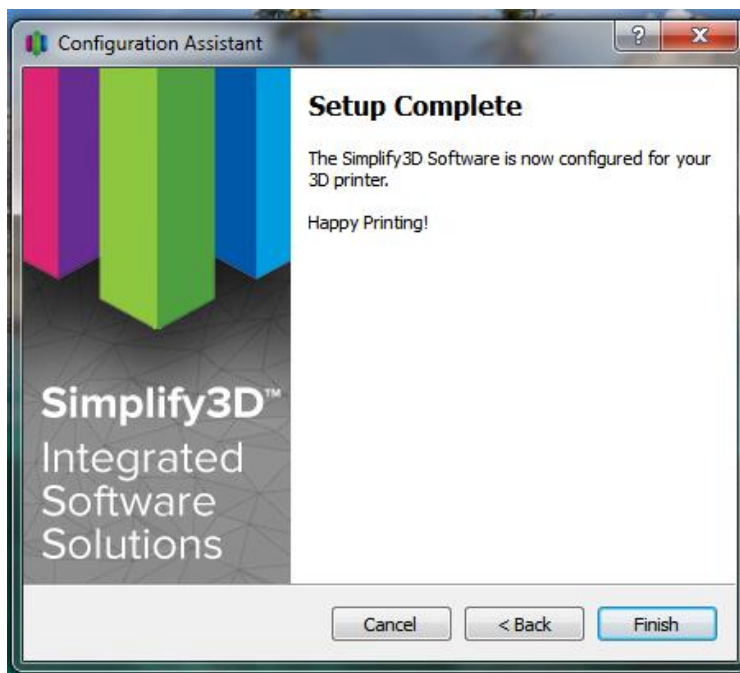
Click “Next”

The next page does not matter, as any settings set here will be over-written when we import the F306 profiles. You can leave the defaults and click “Next”.



The screenshot shows a window titled "Configuration Assistant" with a "3D Printer Information" section. It contains several input fields and dropdown menus for configuring a 3D printer. The fields are: Printer name (New Printer), Machine type (Cartesian robot (rectangular build volume)), Firmware (RepRap (Marlin/Repetier/Sprinter)), Baud Rate (115200), Build Volume (X-Axis: 100.0, Y-Axis: 100.0, Z-Axis: 100.0 mm), Nozzle diameter (0.40 mm), Filament diameter (1.75 mm), and Number of extruders (1). There is also a checkbox for "This printer has a heated bed" which is unchecked. At the bottom, there are three buttons: "Cancel", "< Back", and "Next >".

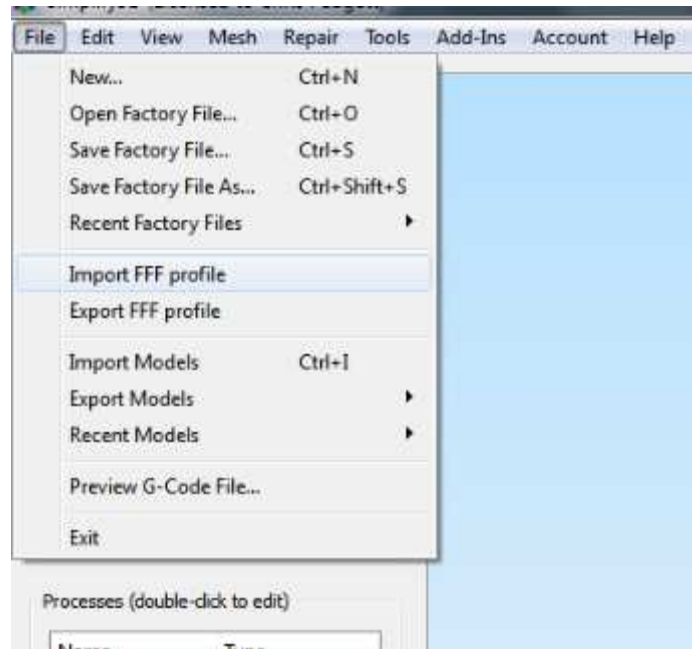
Click “Finish”.



The screenshot shows the same "Configuration Assistant" window, but now it displays a "Setup Complete" message. The message reads: "The Simplify3D Software is now configured for your 3D printer. Happy Printing!". On the left side, there is a graphic with four vertical bars in pink, purple, green, and blue, and the text "Simplify3D™ Integrated Software Solutions". At the bottom, there are three buttons: "Cancel", "< Back", and "Finish".

Simplify will now open.

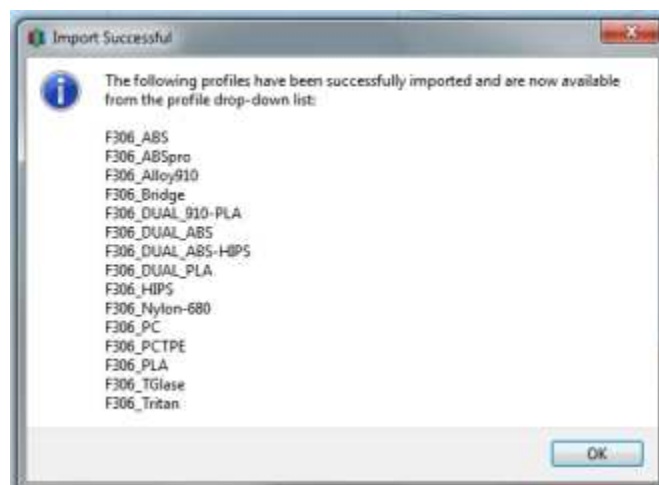
The first thing we need to do is import the configurations for your F306. Go to “File > Import FFF Profile”.



In the dialog box that appears, navigate to the location on your hard drive where you extracted the configuration files in step 3. Select all the profiles you wish to import, and click “OK”.

Note: you can import multiple files at once.

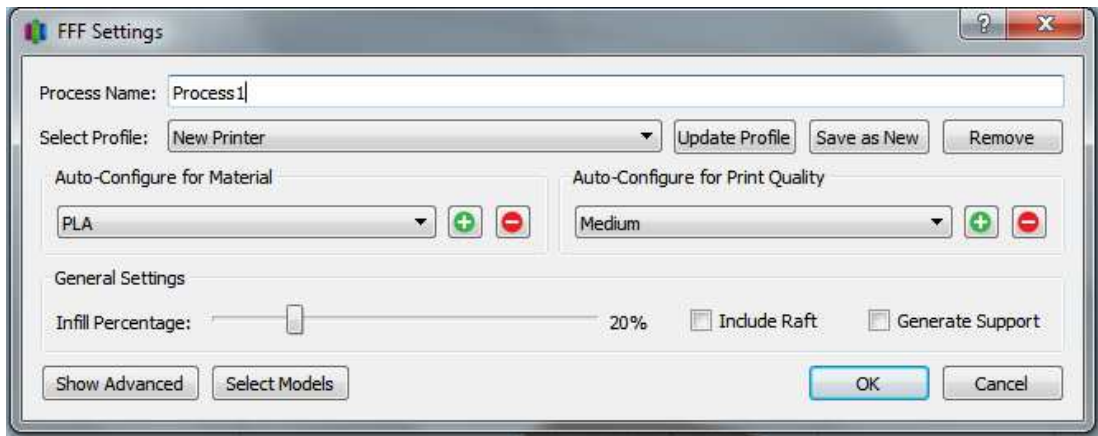
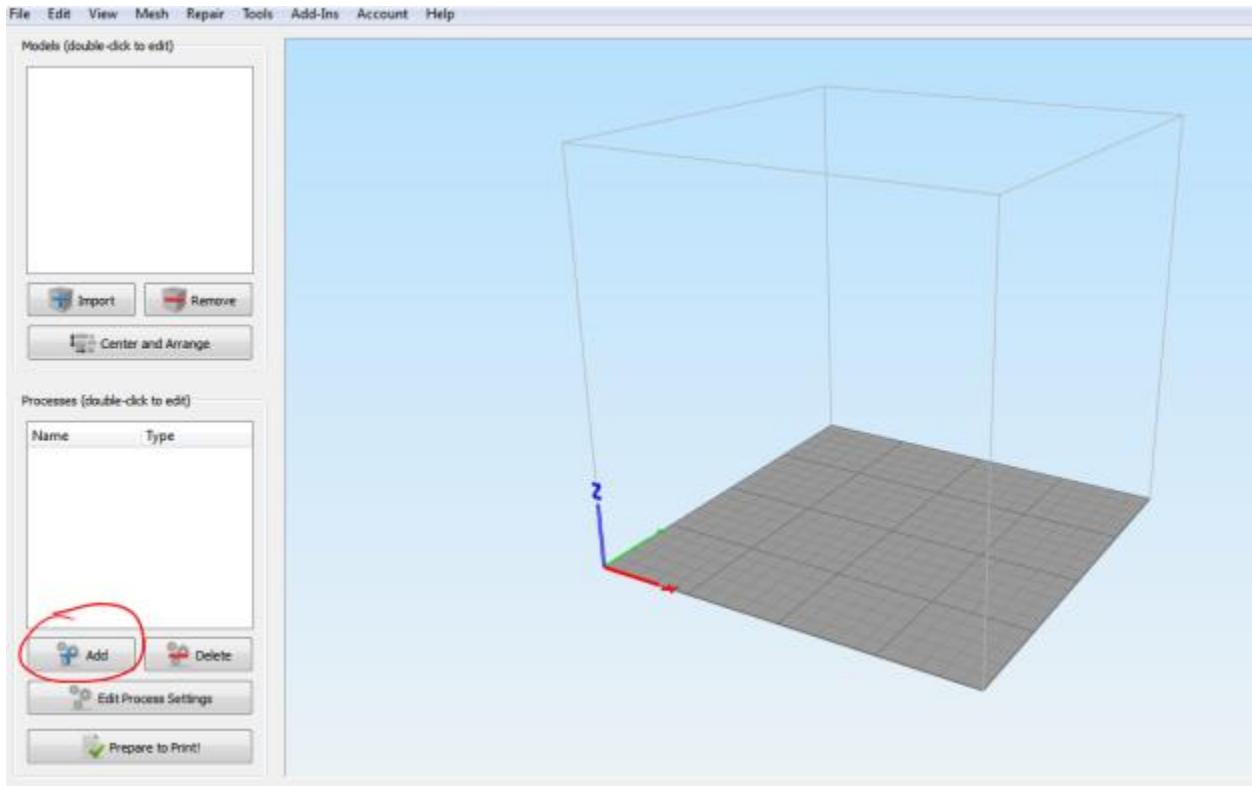
You’ll get a popup saying import was successful.



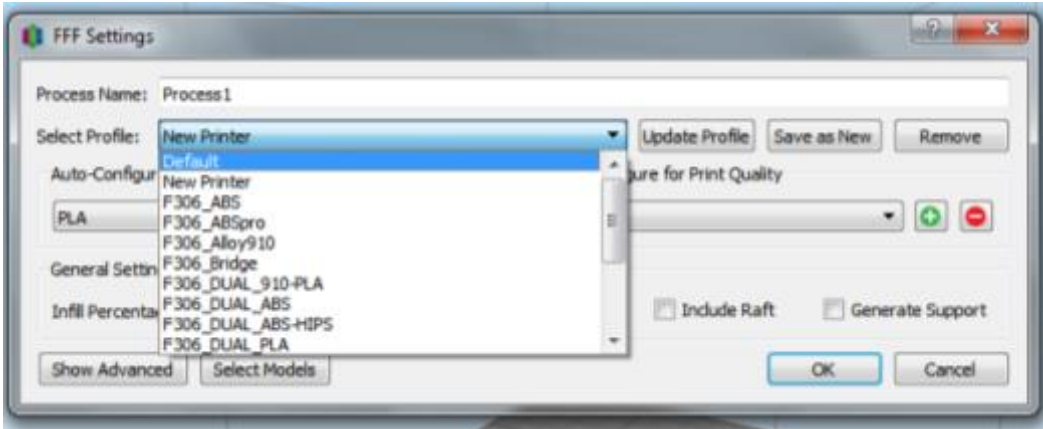
Note: Dual extrusion users will also need to repeat this process for the configurations in the “Dual Extrusion Profiles” folder.

Next, we’ll need to remove the “new printer” preset from the list, since it’s not set up correctly.

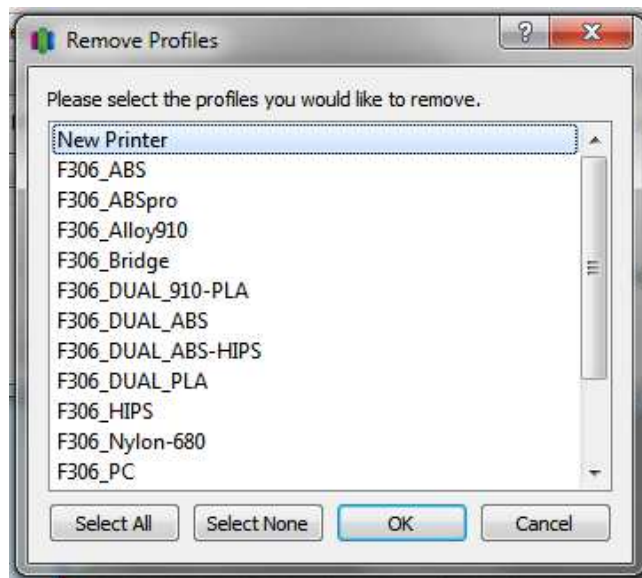
In the bottom left section of the application, click “Add”. A dialog box with various settings will appear.



Click the drop-down menu next to “Select Profile”. You should see a profile called “Default”, a profile called “New Printer”, and all of the profiles you just imported.



Select the “*New Printer*” profile and then click the “*Remove*” button to the right. A small window will pop up. Make sure the “*New Printer*” profile is the only one selected (you can select multiple at once) and click “*OK*”.



Note: the “*Default*” process cannot be removed.

Now Simplify is set up correctly for your printer!

Step 5: First Print

We recommend you run the pre-sliced “*twisted bottle*” file in the “*Getting started prints*” folder on your SD card for your first print. This way you can verify the hardware is working correctly and you don’t have to worry about the software side yet. Remember the printer consumes .gcode files, so this is the files you’ll want to find.

Once that completes, you can load in the “*twisted bottle*” STL file into Simplify, slice it, and print your own gcode file. You should get very similar or identical results.

More Information

Managing printer profiles: <https://www.youtube.com/watch?v=eZ7HFPY1wog>

V3 FAQs: <https://www.simplify3d.com/support/version-3-0-faqs/>

V3 release notes: <https://www.simplify3d.com/software/changelog/>

Simplify Tutorials: <https://www.simplify3d.com/support/tutorials/>