



SIMPLIFY3D INSTALL & SETUP

1. Set Up Your Account

In the box with your printer, you will receive a Simplify3D Software Redemption Card. This is located in the toolkit box underneath your F400.



Attached to the front of the card will be a quick summary of the contents of this guide.

Scratch off the code and follow the instructions on the card to set up your user account and download the installer.

2. Copy Configuration Files to Hard Drive

These are the files that set up Simplify3D for your F400. They have the file abbreviation “.fff”.

You can get them two ways:

- They are included on the SD card that ships with your printer
- Download them from our site: <http://www.fusion3design.com/manuals/>

You will need to create a folder somewhere you can find it (Documents, Downloads, etc). Either extract the zip file, or copy the files in “S3D Profiles” from the SD card to this folder.

There are three sets of configuration files:

- F400-S, 0.4mm nozzle; These are the profiles for the normal F400-S. If you are unsure of what you have, use these profiles.
- F400-S, 0.6mm nozzle; These profiles are for the optional 0.6mm nozzle. You should only use these if you ordered a 0.6mm print head with your printer. Note that you cannot use gcode generated for a 0.4 nozzle with a 0.6, and vice versa.
- F400-HFR; These profiles are for the –HFR variant. If you have a –HFR printer you **cannot** use either set of –S profiles.

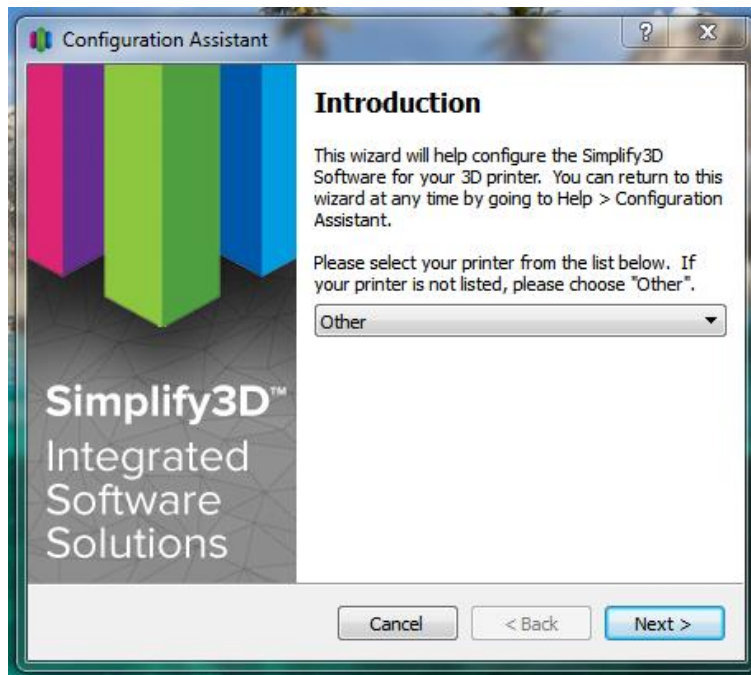
3. Install, First Run, & Setup

Run the installer and follow the install wizard prompts. After the installation is complete, the software will run for the first time.

The first time you run the software it's going to prompt you for your user name and password. You will need to enter the credentials you created in step 1. The software will "phone home" to assign a license key to your installation. **You will need to be connected to the internet for this first run.**

Simplify3D advises that an internet connection is required to run the software. The software can be operated temporarily without an internet connection, but you will periodically be prompted to connect to the internet.

You'll then see a setup wizard:

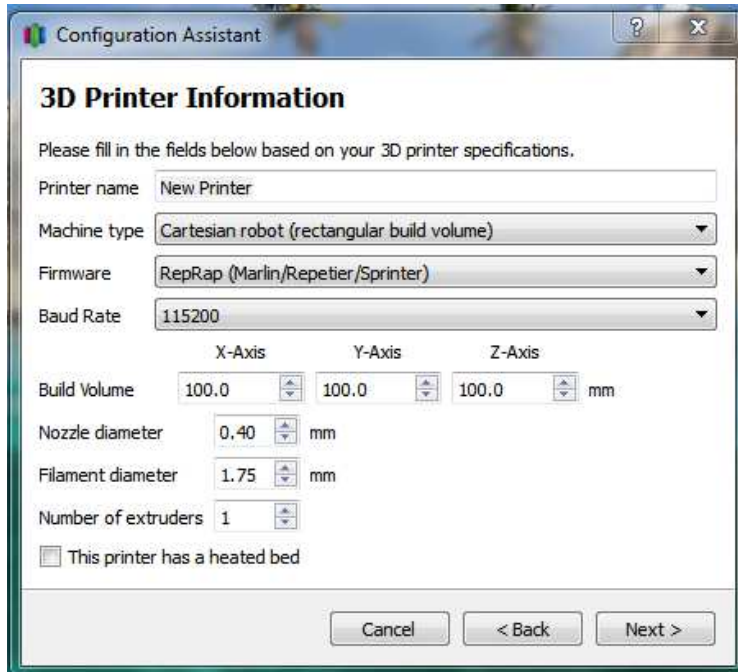


On the introduction page, select "Other" in the drop-down as shown above. If you want you can use the built-in profiles for the F400 and F306, **but in order to fully use your printer you will need to use the profiles we provide (see below).**

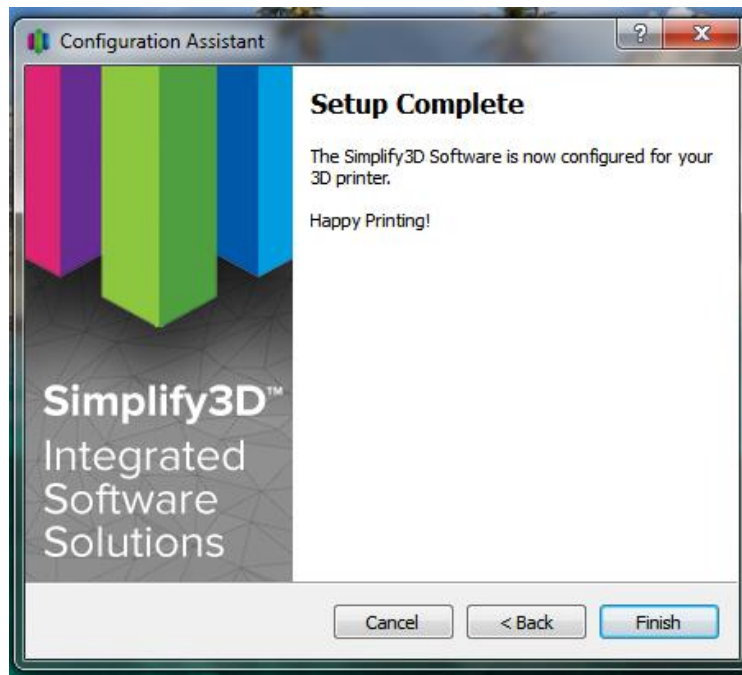
Note: As of 12/1/16 we have provided Simplify3D (the company) a profile for the F400 but it may not appear in the drop-down yet. **If you do not see it, please select "other".**

Click "Next"

The next page does not matter, as any settings set here will be over-written when we import the F400 profiles. You can leave the defaults and click "Next".

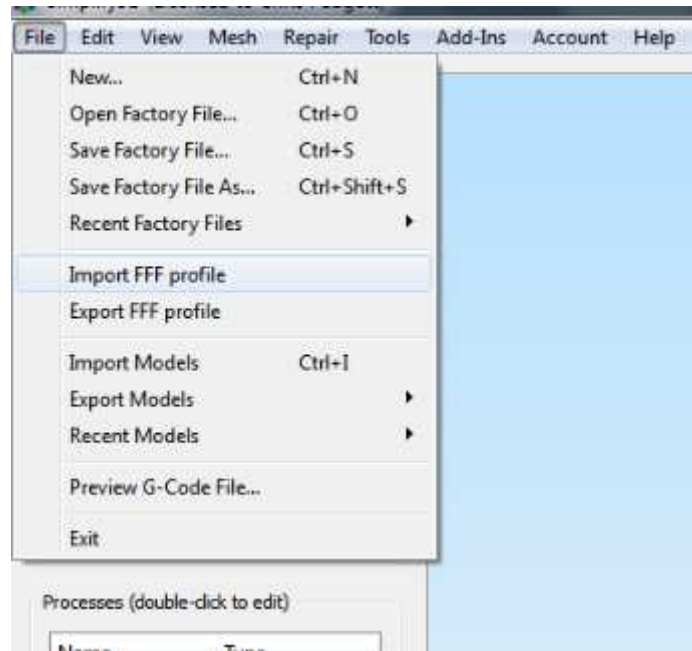


Click "Finish".



Simplify will now open.

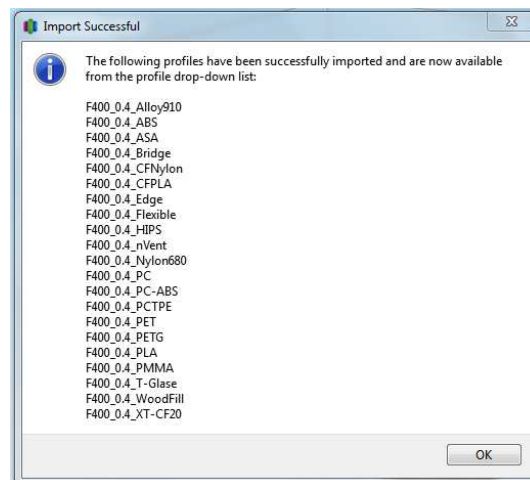
The first thing we need to do is import the configurations for your F400. Go to "File > Import FFF Profile".



In the dialog box that appears, navigate to the location on your hard drive where you extracted the configuration files in step 3. Select all the profiles you wish to import, and click “OK”.

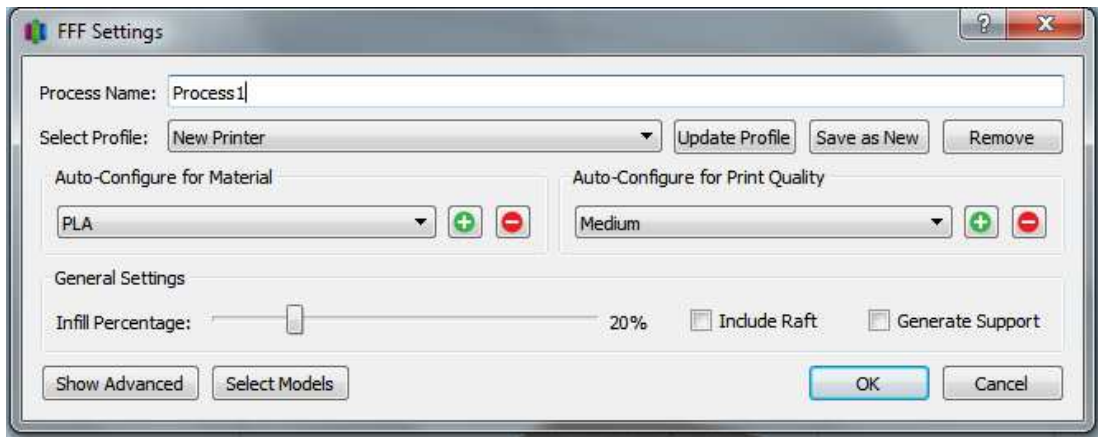
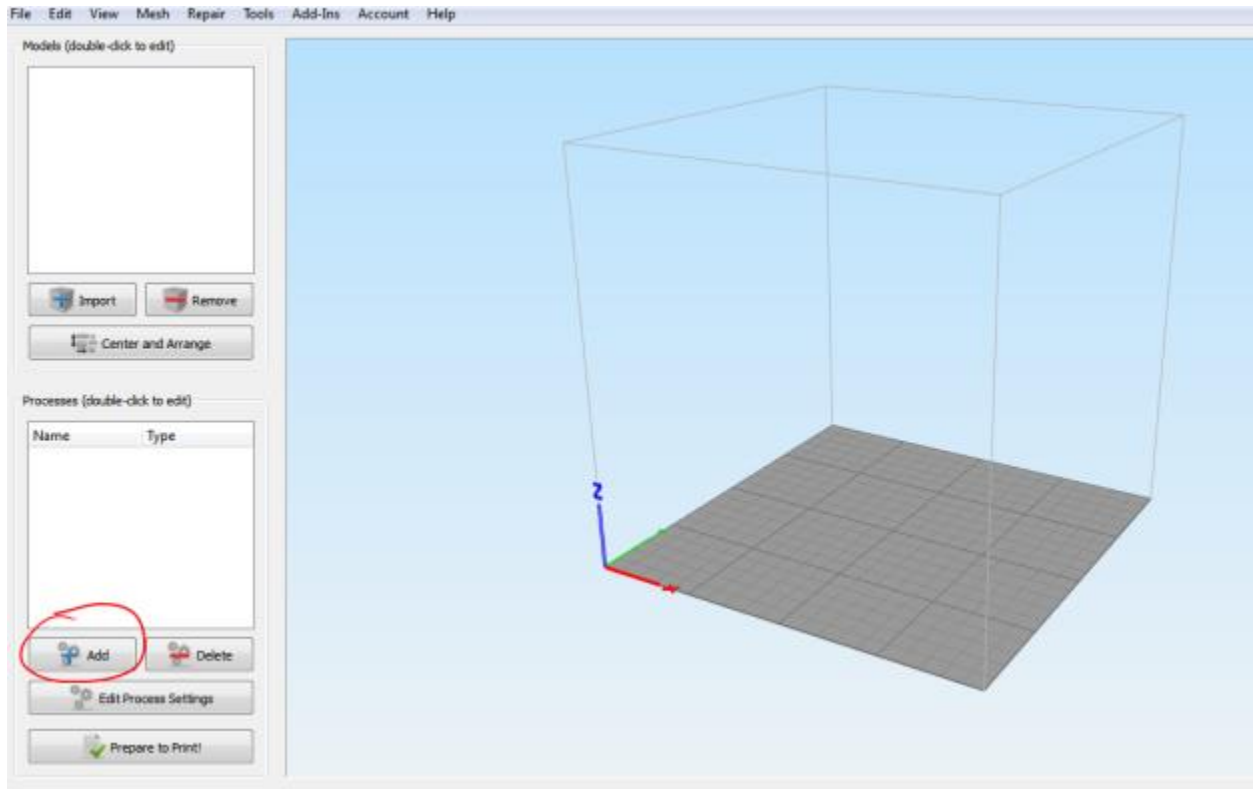
Note: you can import multiple files at once.

You’ll get a popup saying import was successful.

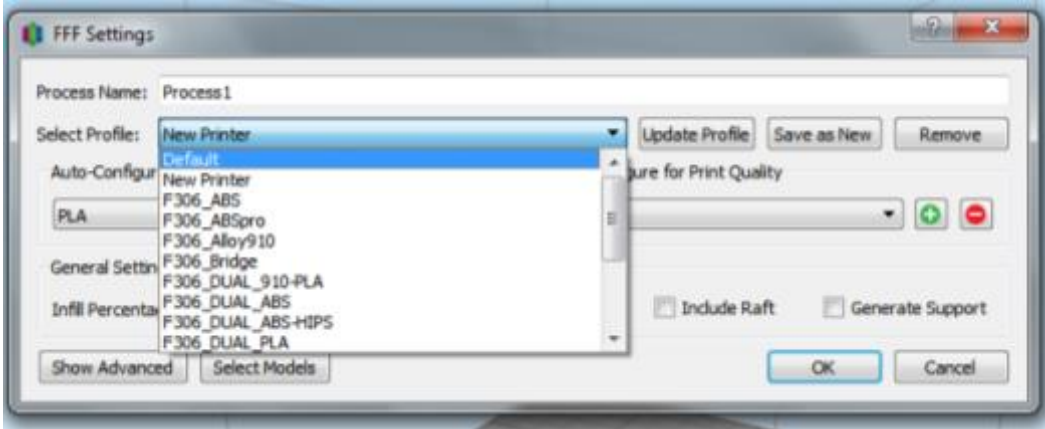


Next, we’ll need to remove the “new printer” preset from the list, since it’s not set up correctly.

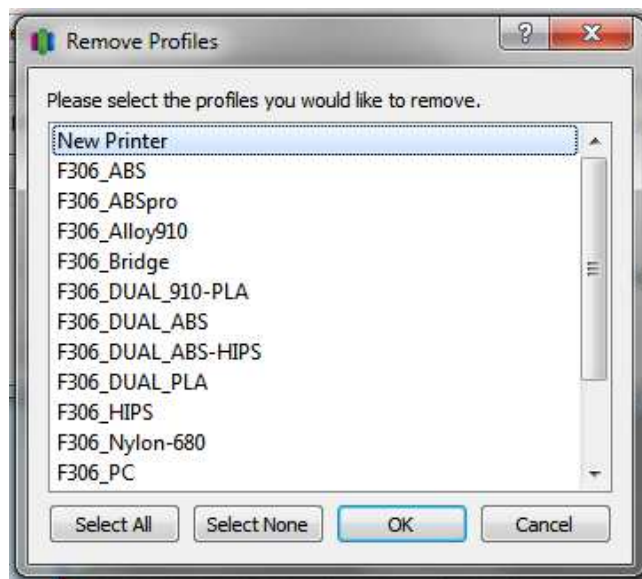
In the bottom left section of the application, click “Add”. A dialog box with various settings will appear.



Click the drop-down menu next to “*Select Profile*”. You should see a profile called “*Default*”, a profile called “*New Printer*”, and all of the profiles you just imported.



Select the “New Printer” profile and then click the “Remove” button to the right. A small window will pop up. Make sure the “New Printer” profile is the only one selected (you can select multiple at once) and click “OK”.



Note: the “Default” process cannot be removed.

Now Simplify is set up correctly for your printer!

4. Your First Print

We recommend you run the pre-sliced “twisted bottle” file in the “Getting started prints” folder on your SD card for your first print. This way you can verify the hardware is working correctly and you don’t have to worry about the software side yet. Remember the printer consumes .gcode files, so this is the file you’ll want to find.

Once that completes, you can load in the “twisted bottle” STL file into Simplify, slice it, and print your own gcode file. You should get very similar or identical results.

5. More Information

Managing printer profiles: <https://www.youtube.com/watch?v=eZ7HFPY1wog>

V3 FAQs: <https://www.simplify3d.com/support/version-3-0-faqs/>

V3 release notes: <https://www.simplify3d.com/software/changelog/>

Simplify Tutorials: <https://www.simplify3d.com/support/tutorials/>