

Updating Simplify3D from V 3.x to V 4

Revision 1 | 8/18/2017

1. Introduction

Simplify3D V4 is a major update that introduces some useful new features and capabilities. However, it also introduces some compatibility issues with our old profiles, and installations of previous versions of Simplify.

In order to ensure you don't encounter issues, we recommend following the clean install procedure in this document. While it's possible to install both versions of Simplify at the same time, we found this led to file association issues and other minor problems.

For version 4, we also had to rebuild all of our profiles (.fff files). Previous versions of our profiles are **not** compatible with V4+, even if they appear to work fine some of the time. Updated versions of our profiles for the F306 and the F400 are available on our website (see link below)

2. Additional info at the end of this document – “special” cases:

1. If you need to / want to keep using 3.x.x
2. If you have “custom” profiles built using Simplify3D 3.x.x or below

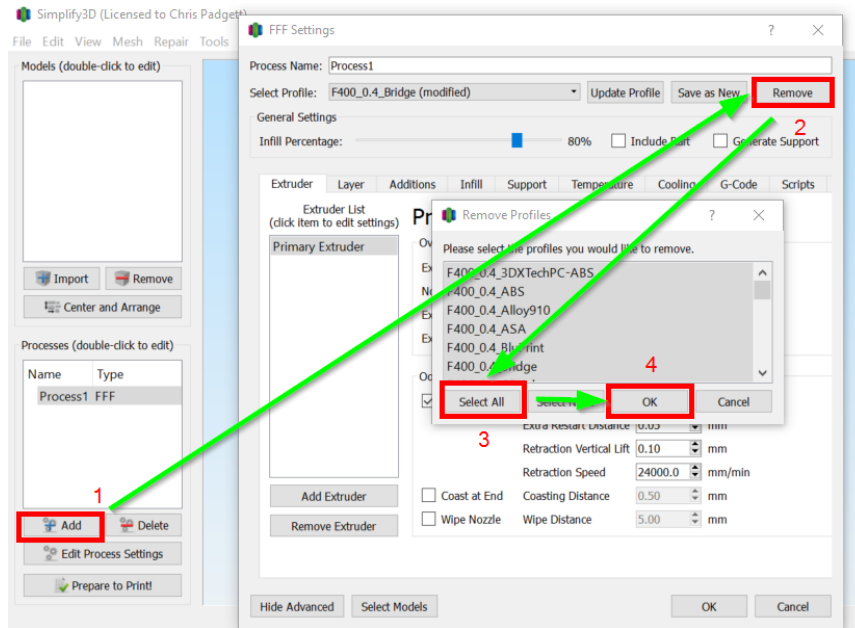
Go to the end of this document if either of these cases apply to you, then proceed to step 3.

3. Downloading Simplify3D 4.0.0 and the NEW profiles:

1. Download and extract the LATEST version of the Simplify3D material profiles for your model of printer (F306 or F400 series) from our website HERE: <https://www.fusion3design.com/manuals/>
2. Login to your Simplify3D account on <http://www.simplify3d.com> with your username and password.
3. Download the new version of the software from their website but DO NOT INSTALL IT YET. Keep it somewhere you can find it to install it later in this procedure.

4. Uninstalling Simplify3D 3.1.1:

1. Open Simplify3D 3.1.1.
2. Add a process, then click “Remove” in the FFF Settings (Process Settings) box, then click “Select All”, then click “OK”:



3. Close Simplify 3.1.1.
4. Uninstall Simplify3D 3.1.1. When it asks you if you want to deactivate your license, select “NO”:

Apps & features

Manage optional features

Search, sort, and filter by drive. If you would like to uninstall or move an app, select it from the list.

	Simplify3D Software Simplify3D	33.4 MB 8/17/2017
		<input type="button" value="Modify"/> <input type="button" value="Uninstall"/>

Deactivate License

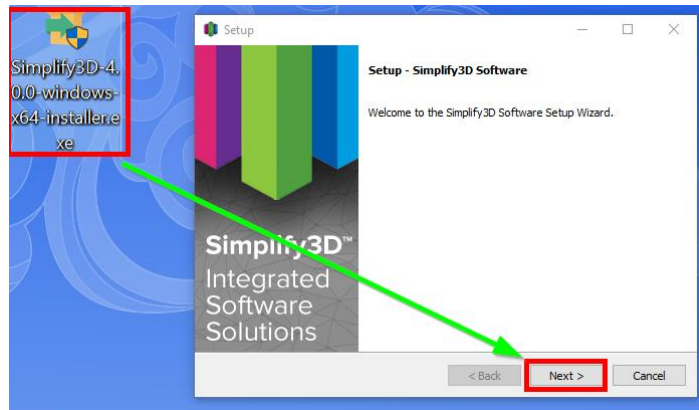
Would you like to deactivate and completely remove your Simplify3D license from this computer?

Note: this will require an active internet connection.

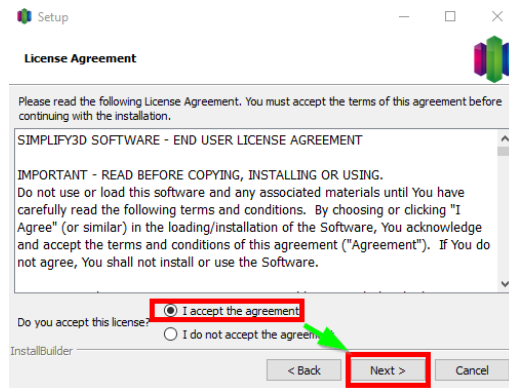
5. If you also have Simplify3D Version 4.0.0 installed, uninstall that version as well.
6. If you have a registry cleaning app installed, like CCleaner, run that.
7. Reboot your PC.

5. Installing Simplify3D 4.0.0:

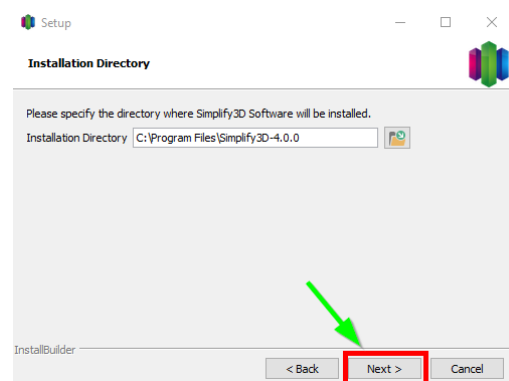
1. Open the Simplify3D 4.0.0 Installer from the location you saved it to, and click “Next”:



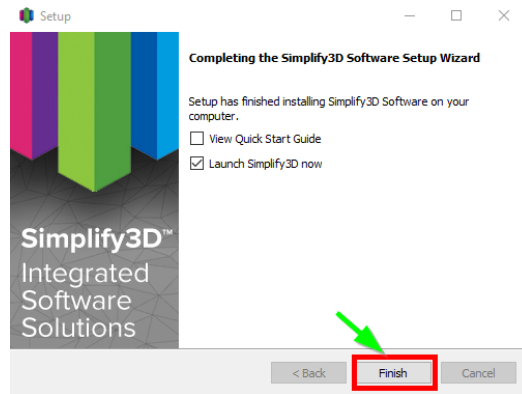
2. Accept the License Terms, then click “Next” again:



3. Keep the default installation directory and click “Next”:

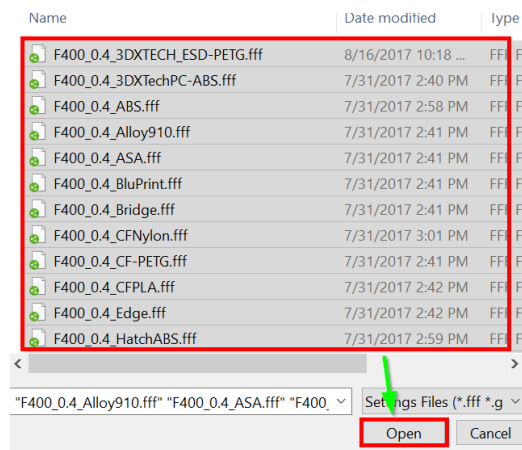


4. On this last window, make sure only the second checkbox is selected, then click “Finish”.



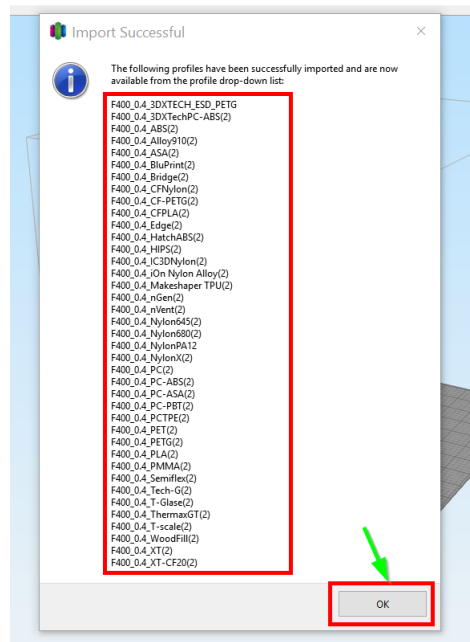
6. Setting Up Simplify3D 4.0.0

1. Simplify3D 4.0.0 will open automatically when you click “Finish” in the installer. You should not have to log-in but if you do, it’s the same username and password as earlier when you downloaded V4.
2. Go to File>Import FFF Profile. The following window will pop up. Browse to where you extracted your profiles to, and open the folder that corresponds to your machine model and nozzle size (in this example, that’s an F400-S with the stock 0.4mm nozzle):



3. Select all the profiles you want to be able to use (or select all of them) and click “Open”.

4. The following window will appear after a few moments:



5. Once you see this window, you're done. Click "OK" and you're all ready to use Simplify3D version 4.0.0!

7. ADDITIONAL INFO FOR "SPECIAL CASES"

- If you need to stay on version 3.x.x for whatever the reason** (security reasons, lack of internet connection on the host PC, etc) that is okay – but we still ask that you update your profiles – the new profiles still work with 3.x.x.

 - Please follow ONLY steps 1 and 2 above under "Uninstalling Simplify3D 3.1.1" to delete all your old profiles.
 - Using the "Setting up Simplify3D 4.0.0" section above, install the new profiles downloaded from our website. (except you'll be doing this procedure on 3.1.1, not 4.0.0- it's identical)
- If you have custom profiles you've built in Simplify3D V3.x.x or earlier, they will not work with V4.0.0 without issues.**

 - We ask that you take screenshots of all the settings you made to your "custom" profiles and re-build them using the new, stock, 4.0.0 compatible profiles as a template once you get Simplify3D 4.0.0 installed and set-up.