

Fusion3

EDGE 3D Printer

INSTALLING & REPLACING STANDARD GLASS PRINT SURFACE

Revision 5/28/2022

INSTALLING & REPLACING STANDARD GLASS PRINT SURFACES

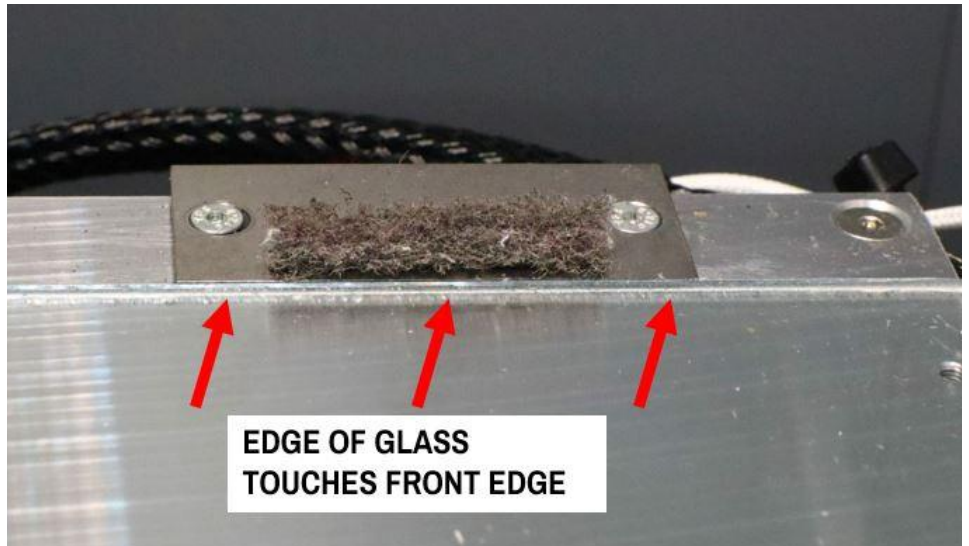
How to install and replace a glass print surface on EDGE

INSTALLING THE GLASS PRINT SURFACE

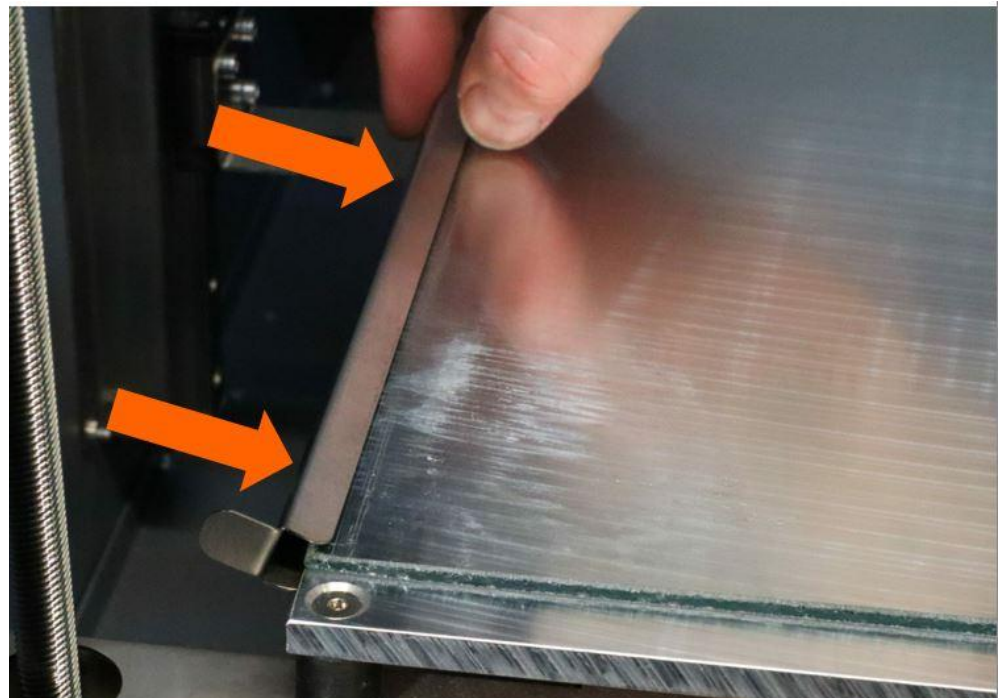
1. Make sure the bed is < 45 C.
2. Make sure both sides of the glass panel are clean and free of debris.
3. Make sure the tool plate surface is clean and free of debris.
4. Place the panel onto the tool plate. Align the left and right edges with the edges of the tool plate.



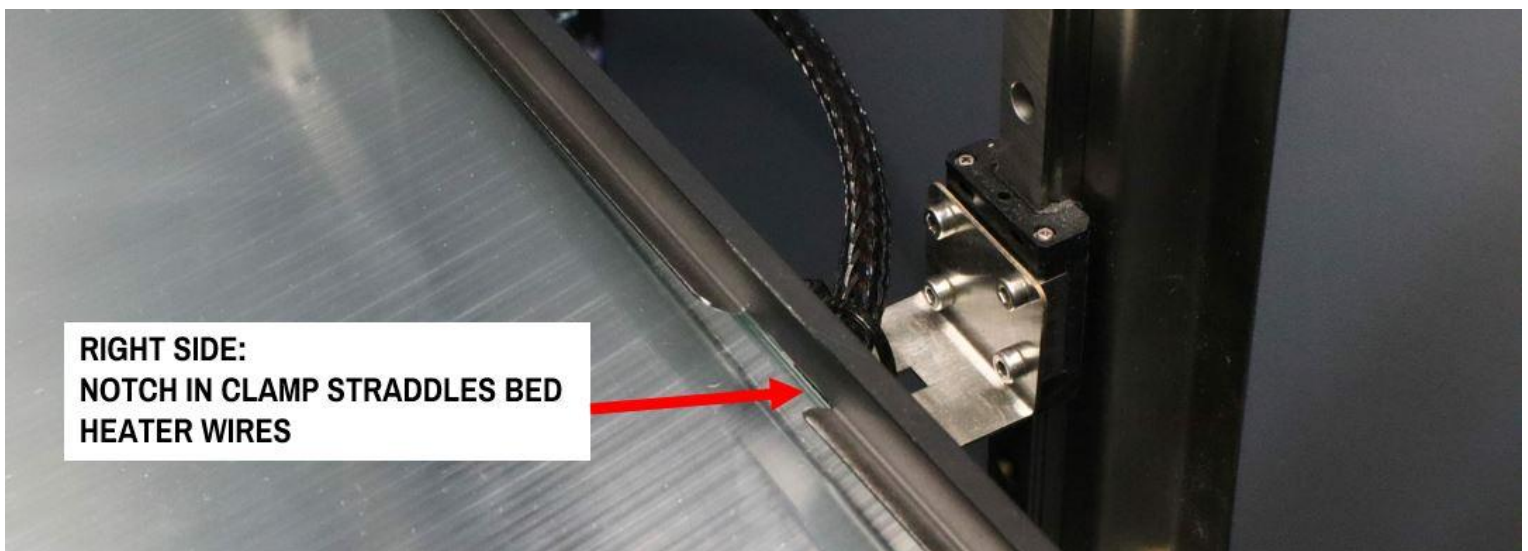
5. Slide the panel rear-ward until it touches the scrub plate.



6. Install the edge clamps over the tool plate and glass. Start at one end and work your way to the other end of the clamp. Make sure the glass stays aligned on the tool plate.



7. Repeat for the other edge clamp.

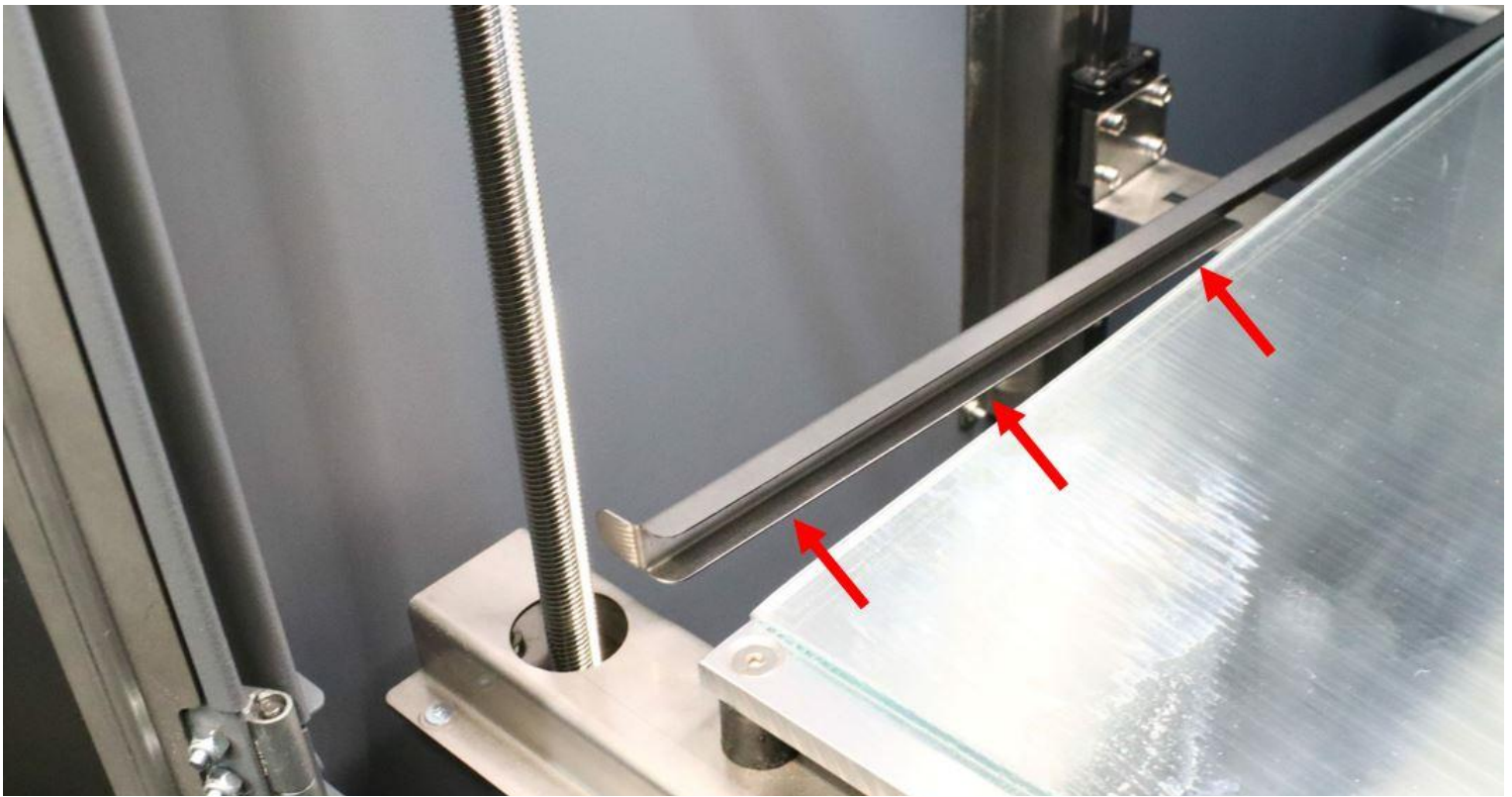


8. If you have quick-turn mode enabled, make sure you manually run an "Auto Bed Level" at least once to store the new surface map in memory. (*Menu > Utilities > Bed Leveling > Run Auto Bed Level*)

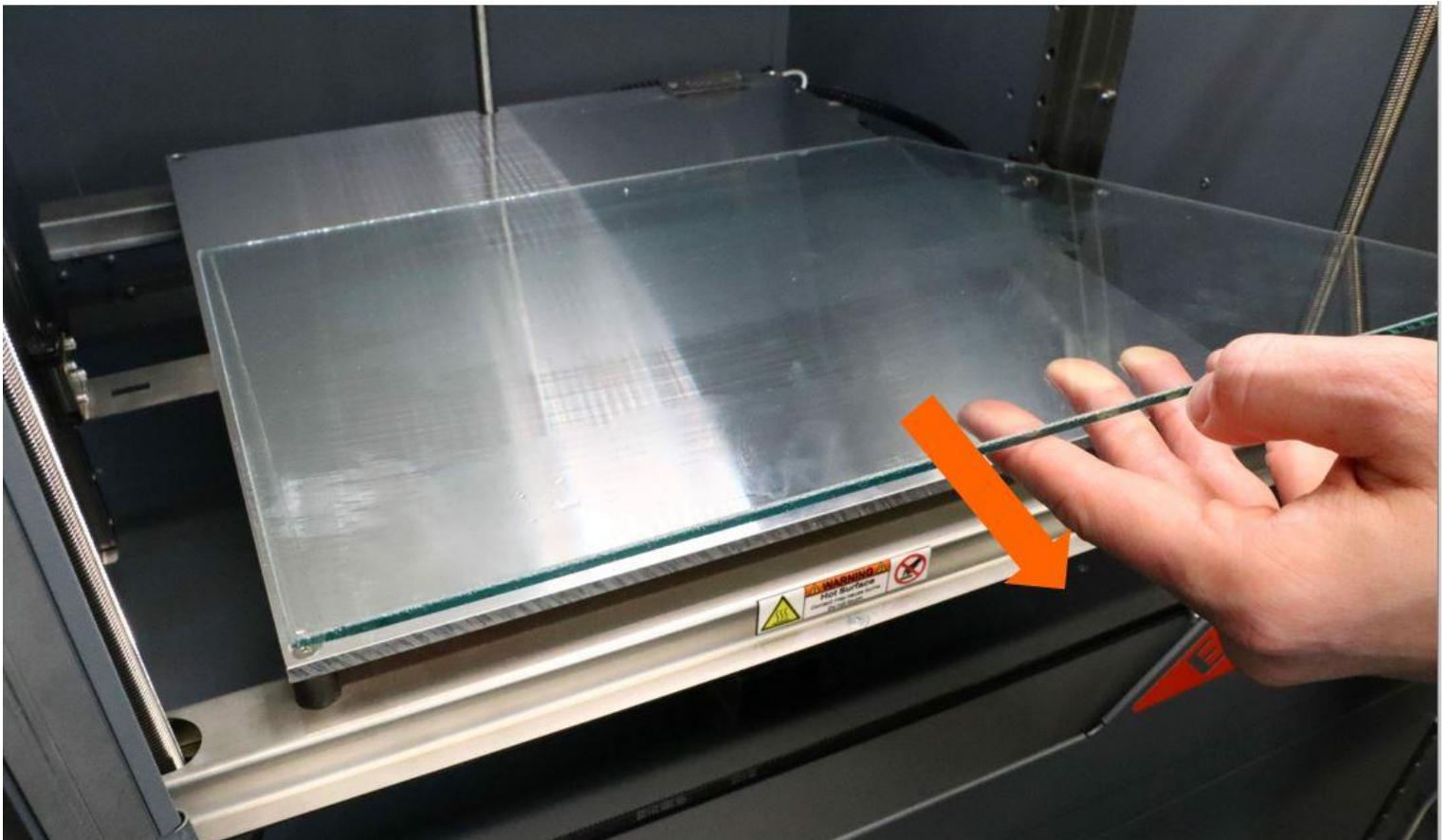
REMOVAL

1. Make sure the bed is < 45 C.
2. Remove any finished or partially finished prints from the bed.
3. Move the Z axis to the bottom of its travel.
4. Grip the bed clips by their pull tabs and pull them sideways off the bed.





5. Slide the glass off of the bed.



REPLACE OR FLIP?

Both sides of the glass are usable as print surfaces. If one side becomes damaged, but the panel is not cracked all the way through, you can turn it over and use the other side.

pic

If you decide to flip it over, make sure you thoroughly clean what is now the bottom face:

- Plastic debris can keep the glass from making good contact with the tool plate, which results in poor heat transfer, hot and cold spots, and therefore poor print adhesion.
- Gluestick or other print surface residue can transfer to the tool plate when heated. This can cause rough spots or cosmetic blemishes.

NOTE: Once the glass panel becomes damaged, you should expect a shorter useful life out of the second side vs the first side.

If both sides of the panel are damaged, or you don't want to flip it over, discard it in your trash or recycling.

PANEL INFORMATION

Fusion3 sells replacement glass panels, but you can also source them locally.

- Dimensions: 15" x 15" x 1/8" (381 x 381 x 3.175 mm)
- Material: Standard soda-lime glass; not tempered
- You can use borosilicate but it is not necessary

Related Articles / Resources:

Tags: edge, print bed, print surface, glass, replace