

**Fusion3**

# **EDGE 3D Printer**

## **MAINTENANCE: REMOVING & INSTALLING THE EXTRUDER**

**Revision 6/23/2022**

# EDGE EXTRUDER REMOVAL & INSTALLATION

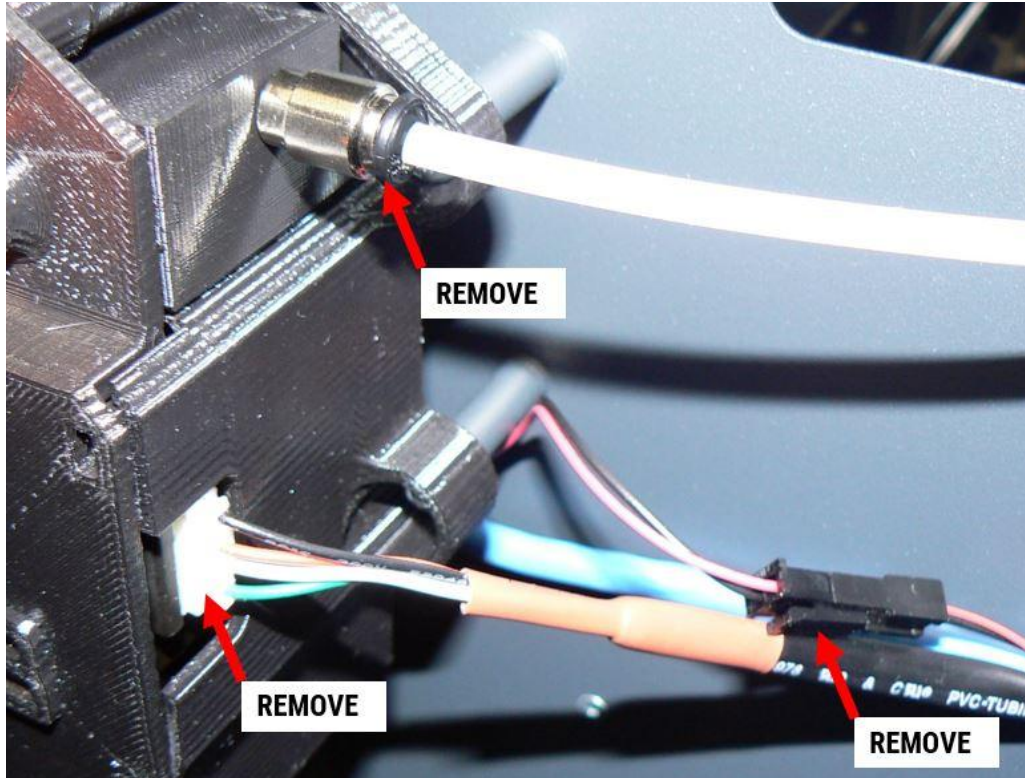
How to properly remove & install the extruder on EDGE

## REPLACING THE EXTRUDER

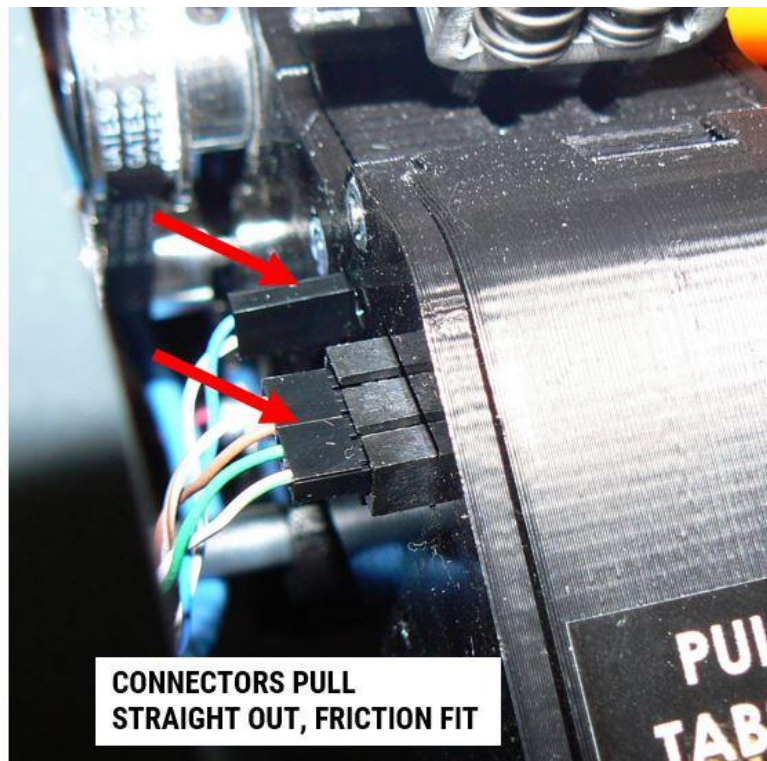
EDGE should be idle, off, and cold (print head & bed).

### Removing:

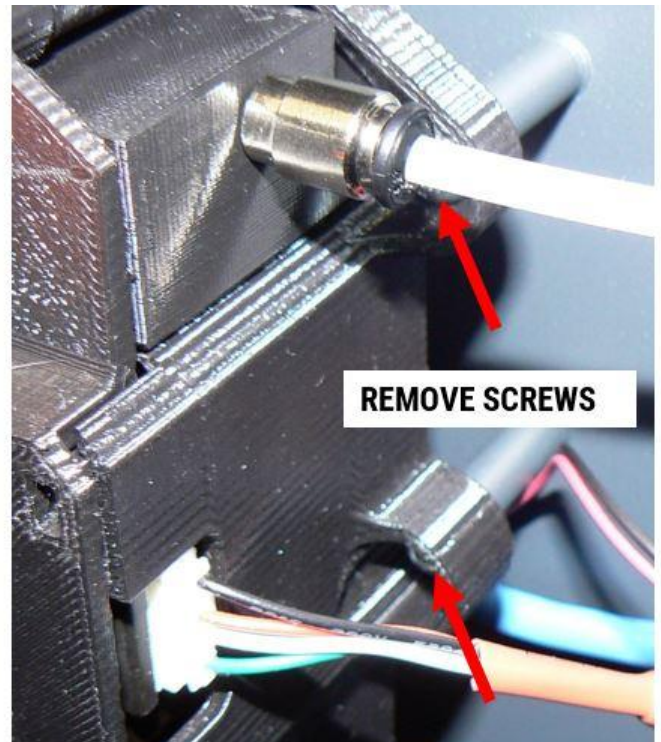
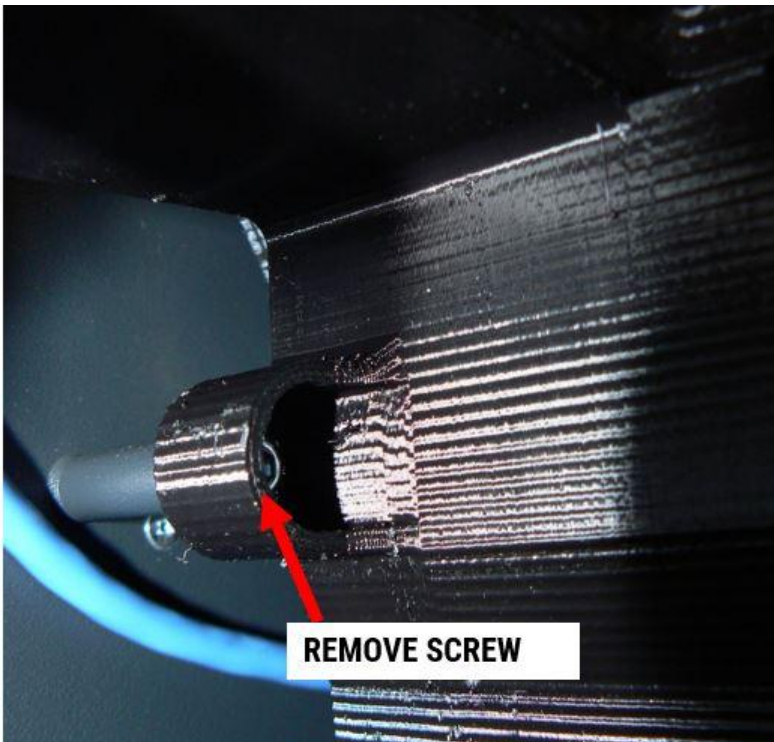
1. Disconnect the following connectors:
  - a. Bowden tube (see how to use a PTC fitting in the "Replacing a Bowden Tube" module)
  - b. Extruder motor (friction fit; pull straight out)
  - c. Extruder fan (push catch on connector to release)

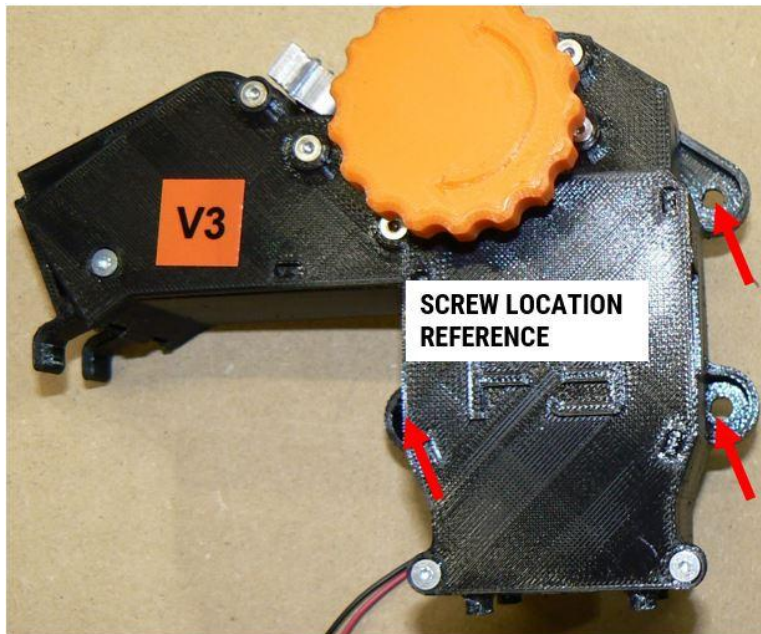


- d. Filament monitor (2 connectors; friction fit; pull straight out)



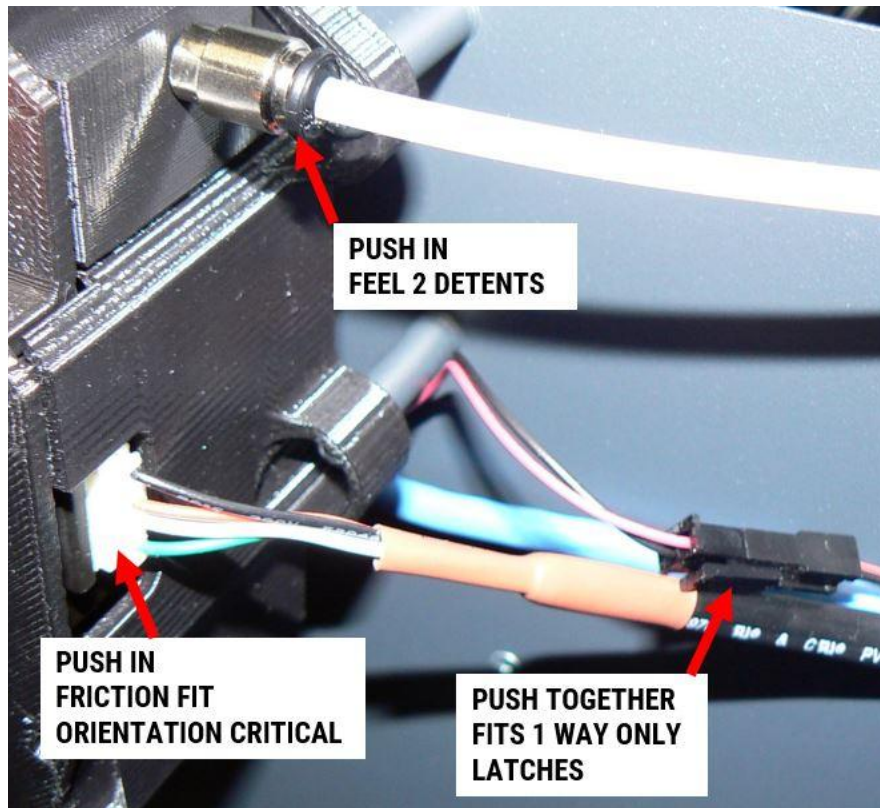
2. Use the 3mm hex drive from your toolkit to remove the 3 M5 button head screws that hold the extruder onto its mounting standoffs. Support the extruder with your hand as you remove the last screw.



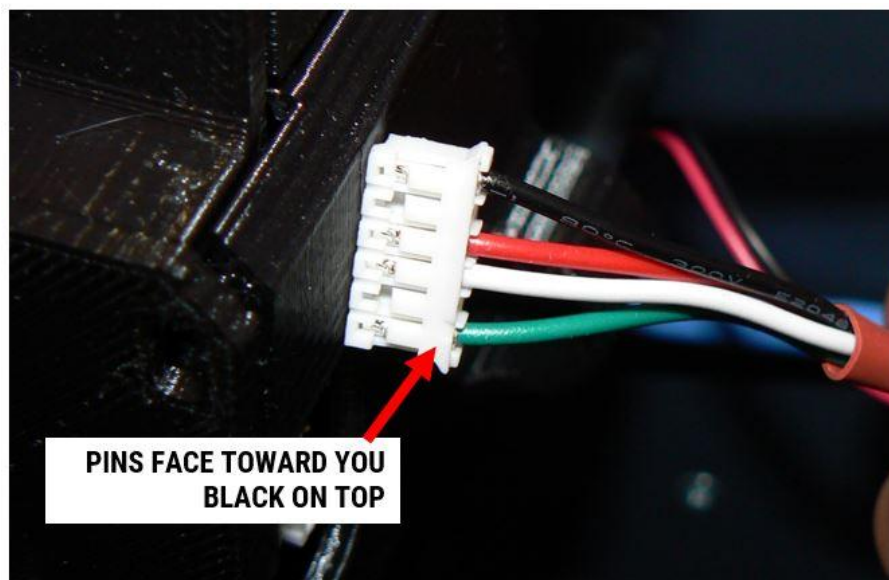


## Installing:

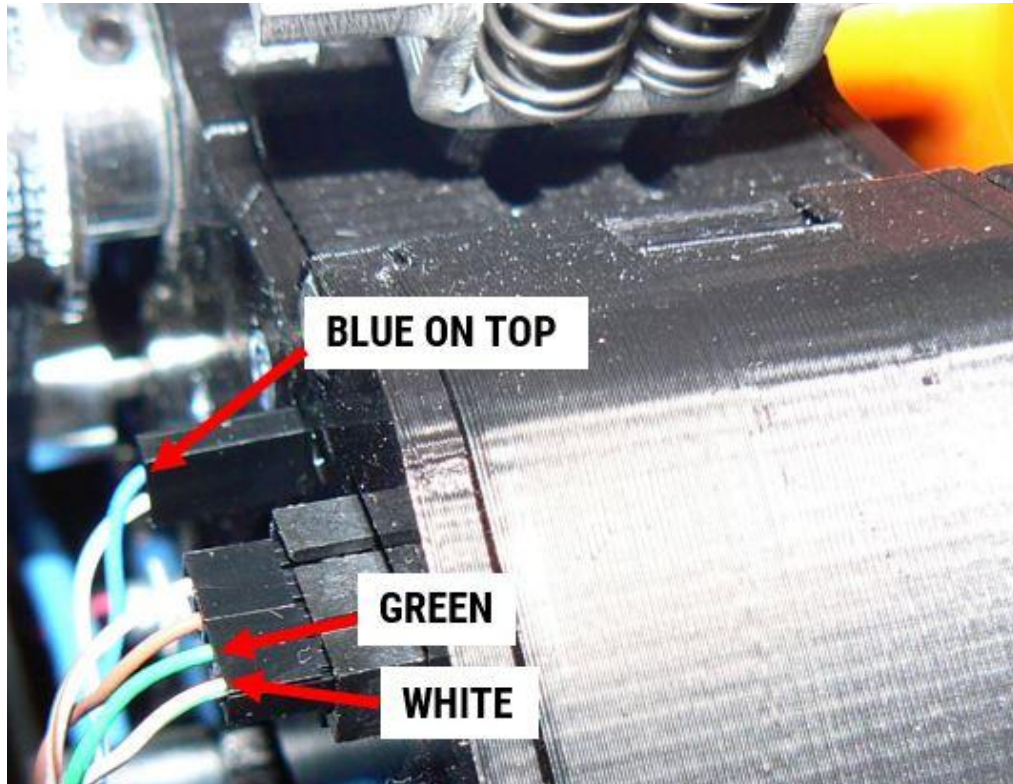
1. Install the extruder onto the 3 standoffs using the 3 M5 button head screws.
2. Reconnect the following connectors:
  - a. Bowden tube (push straight into PTC fitting)
  - b. Extruder fan (orientation is critical only fits 1 way)



- c. Extruder motor (orientation is critical only fits 1 way)



- d. Filament monitor (4 pin) (white/green should be closest to you)
- e. Filament monitor (2 pin) (blue wire on top)



## POWER UP & FUNCTION CHECK

1. Power EDGE on.
2. On the LCD, go to the *Control* screen and make sure your "*Current timeout (s)*" value is not zero (default 12).
3. Load filament and make sure that:
  - a. The extruder fan begins to turn as the print head reaches 45C
  - b. The extruder motor spins correctly
  - c. Filament loads and extrudes out of the head without issue.

## TROUBLESHOOTING

**Extruder doesn't turn:** Check motor wire connection

**Filament monitor doesn't communicate:** Check that BOTH monitor connectors are in the correct orientation and fully plugged in.

**Fan doesn't run:** (Should only run when print head is > 45°C) Check fan wire (red/black with in-line connector)