

Fusion3

EDGE 3D Printer

UPGRADE: SCRUB PLATE SPACER

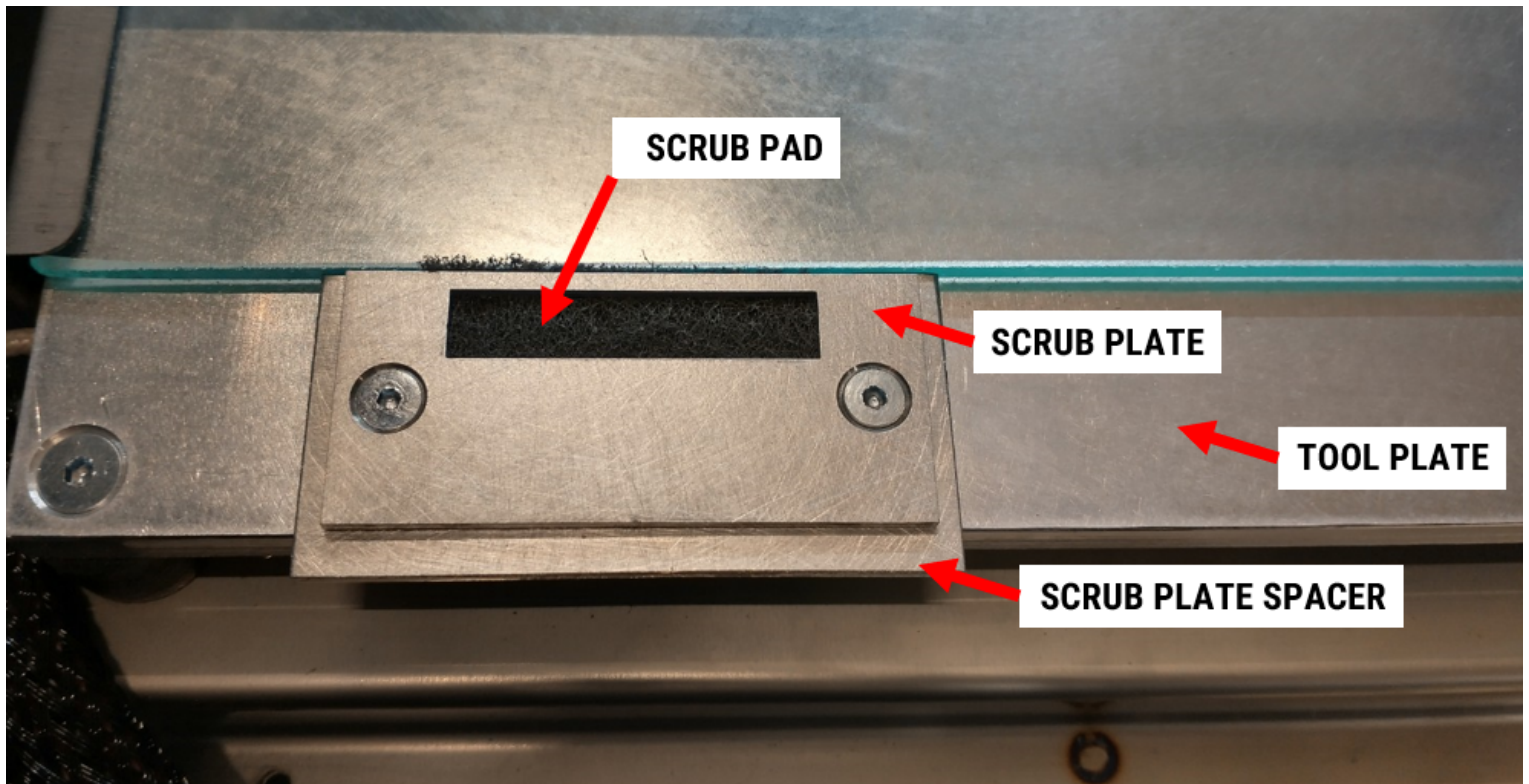
Revision 3/29/2023

INSTALLING THE SCRUB PLATE SPACER

INTRODUCTION

The scrub plate spacer is a metal plate that goes under the scrub plate. This part replaces the stack of washers and washer-retaining o-rings.

- Makes it easier to remove the scrub plate - you don't have to keep the washers on the screws, or chase the washers around if they fall off.
- Makes the nozzle offset calibration more consistent - we've removed compliance (the rubber o-rings) from the system, made the height more consistent (plate vs washers), and better supported the scrub plate so it doesn't tilt when force is applied.



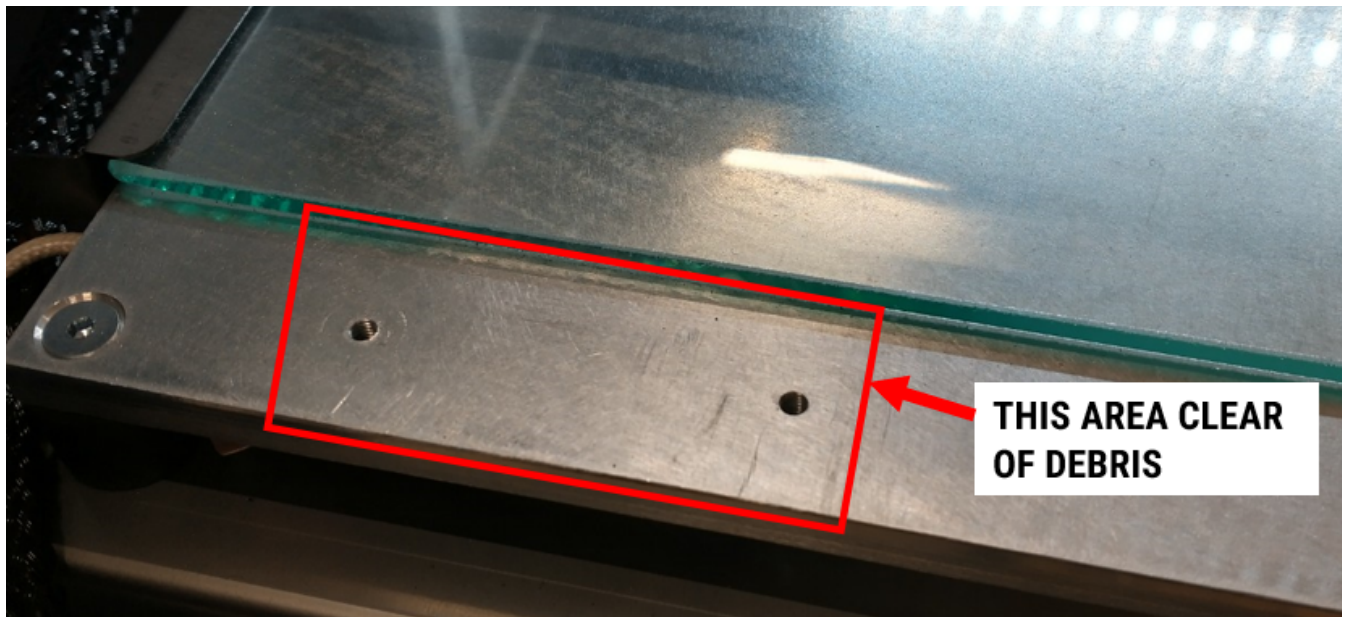
HOW TO GET IT

For printers with serial numbers higher than E10313, your printer comes with the spacer already installed.

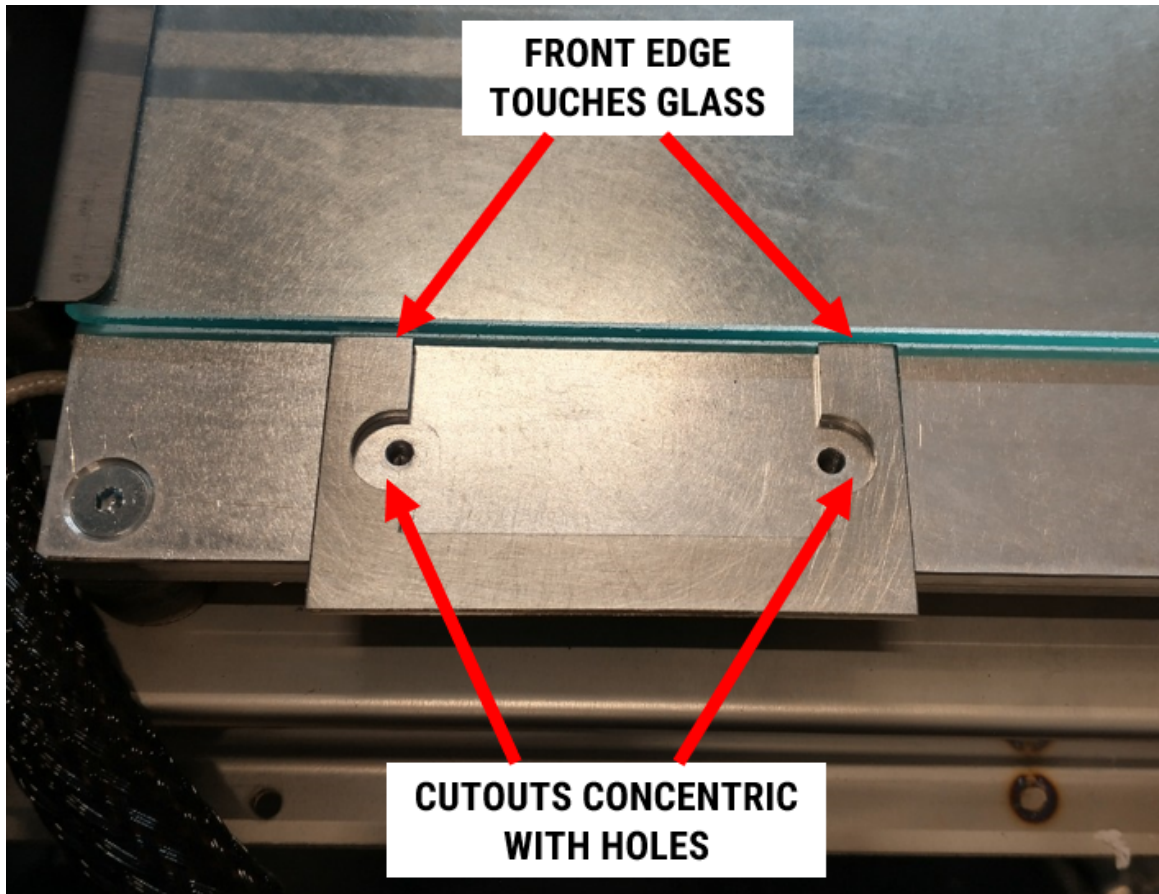
For everyone else, this part is available in our store [HERE](#).

HOW TO INSTALL IT

1. Move the bed to the bottom.
2. Power EDGE off. The print head and bed should be idle and cold.
3. Remove the scrub plate as you normally would to change the scrub pad.
4. Remove the washers and rubber o-rings from the screws and discard them.
5. Make sure the tool plate is clear of debris. If there is debris on the tool plate, it will make the scrub plate spacer and scrub plate sit crooked and defeat the whole purpose of the spacer. Brush it off as needed.



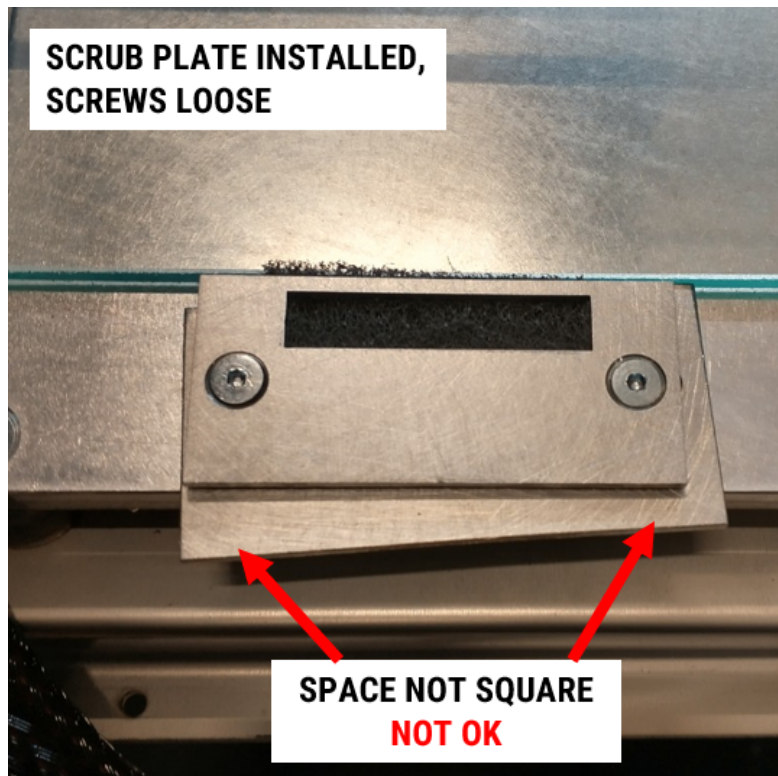
6. Position the spacer so that the circular cutouts are concentric with the holes in the tool plate.



7. Position the scrub pad in the cutout as shown.

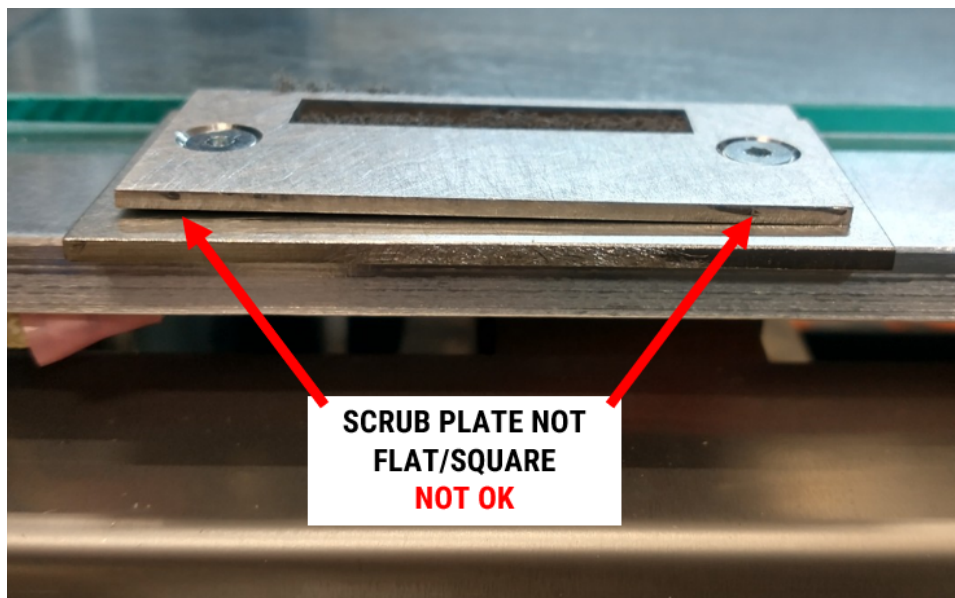
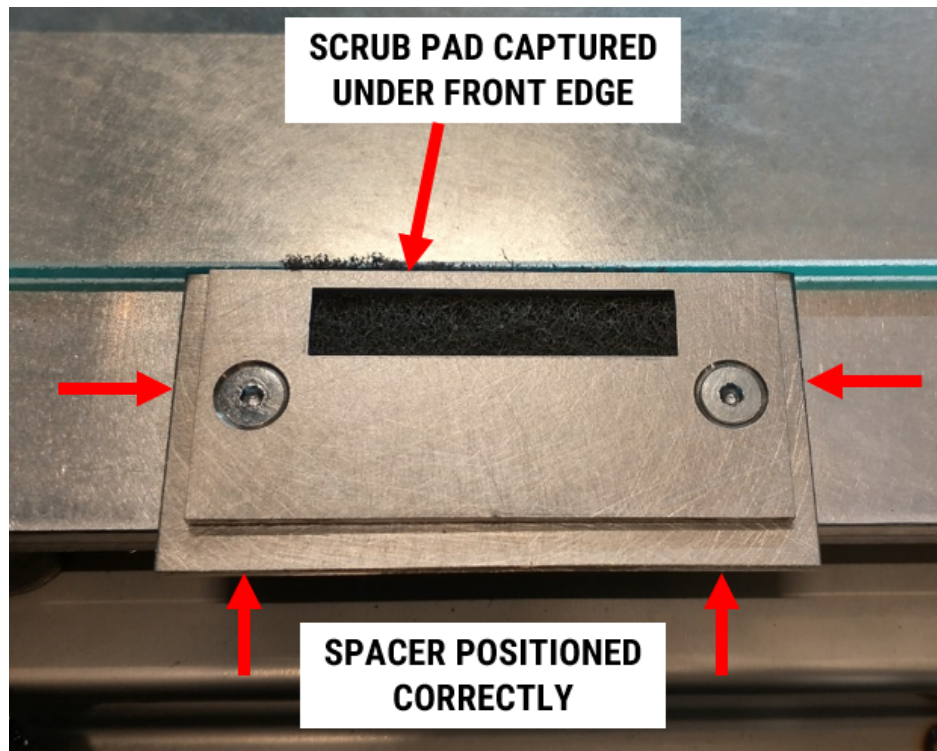


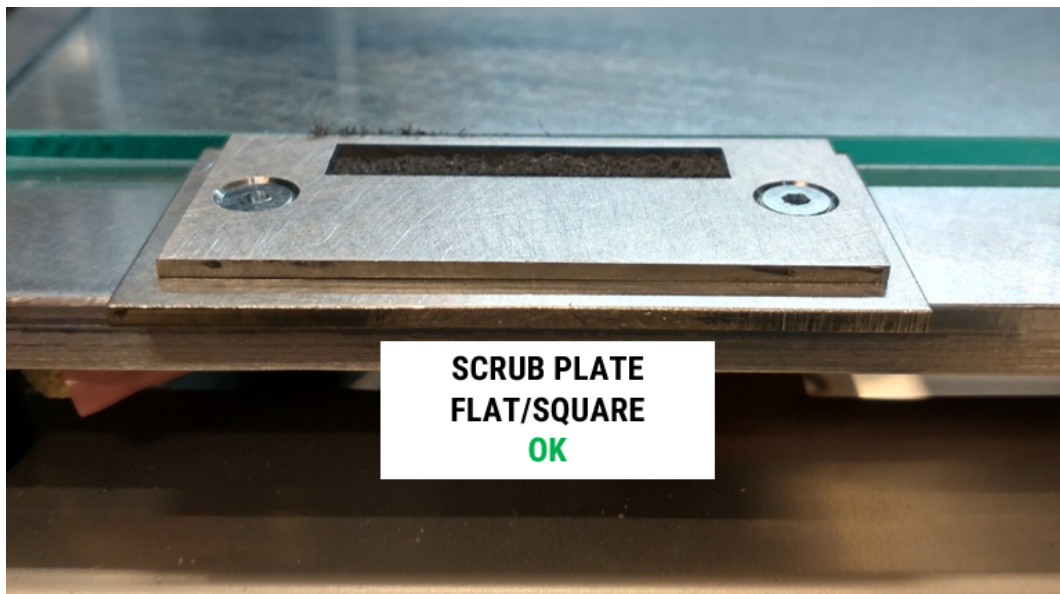
8. Stack the scrub plate on top of the spacer and pad, and thread the screws into the tool plate so that they've grabbed, but you can still slide things around.



9. Make sure:

- a. The front edge of the scrub pad is under the front edge of the scrub plate, so it's held in place.
- b. The spacer sticks out evenly on both sides and the back





10. Tighten the screws firmly.

11. Run *Utilities > Bed Leveling > Run Nozzle Offset* and confirm it works.