

**Fusion3**

# **EDGE 3D Printer**

## **ADVANCED TOPICS: PASSWORD PROTECTION**

**Revision 6/15/2023**

# CONFIGURING PASSWORD PROTECTION ON EDGE

How to configure password protection to prevent unauthorized access to your EDGE printer

## INTRODUCTION

A 3D printer can present a tempting target for unauthorized use or tampering, particularly in public or semi-public environments. EDGE has the option of configuring password protection on both the onboard control panel AND the network interface (both are controlled by the same password). When enabled, the password must be entered before anything can be done with the printer.

### NOTE:

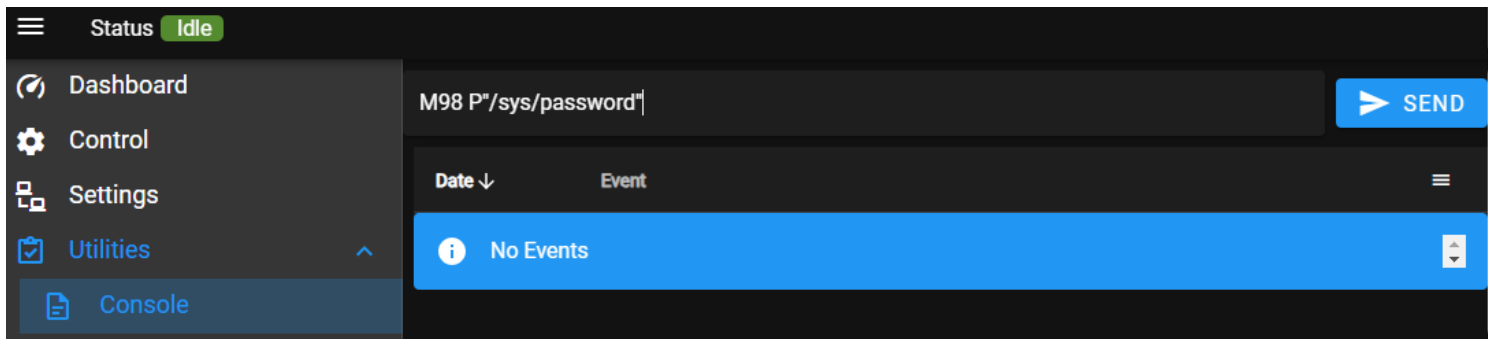
If the password is enabled, you will not be able to see any information on the onboard control panel without entering the password.

### NOTE:

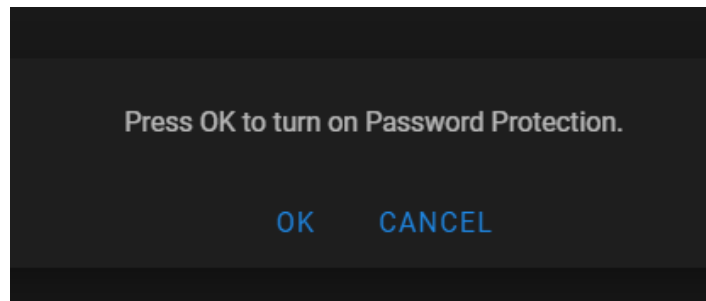
On EDGE, enabling the password will enable it for the onscreen LCD AND any remote connections over the network.

## TO ENABLE THE PASSWORD

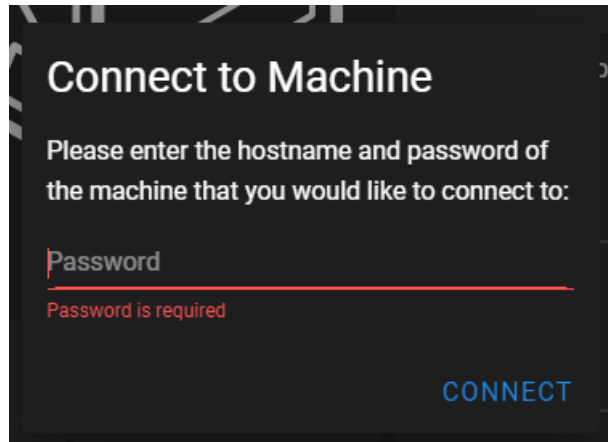
1. Go to the *Utilities > Console* screen.
2. Enter the command **M98 P"/sys/password"** and press enter / send. Make sure you include the quotation marks.



3. In the dialog box, press "OK" to enable the password. Press "CANCEL" to abort.



4. The password is now enabled.
5. Each new computer connection to the network interface will require the user to enter the password.

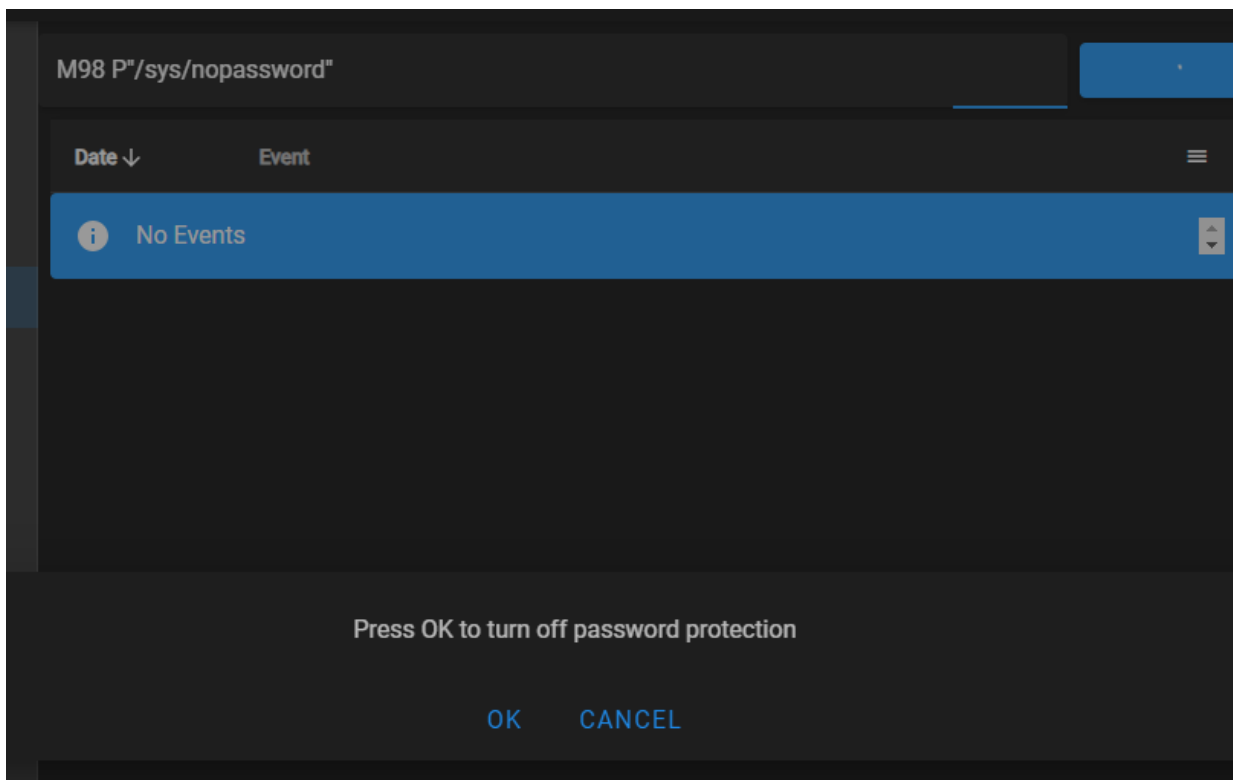


## WHAT IS THE PASSWORD?

The default password is "**fusion3edge**".

## HOW TO DISABLE THE PASSWORD

1. Go to the *Utilities > Console* screen.
2. Enter the command **M98 P"/sys/nopassword"** and ENTER or SEND. Make sure you include the quotation marks.
3. In the dialog box, press "OK" to enable the password. Press "CANCEL" to abort.



4. Go to the *Settings* screen and press REFRESH, or press F5 on your computer.

## HOW TO CHANGE THE PASSWORD

1. Connect to your printer's network interface using a computer and web browser.
2. Navigate to **[your printer's IP address]/files/system**
3. Locate and open "*config.g*".
4. Scroll down until you find the section named "*; password check*", towards the bottom of the file.
5. Locate the line that says **M551 P"fusion3edge"**. Edit the text inside the quotation marks to change the password.

```
;password check
if global.password = true           ;check if password should be on or off
    M551 P"fusion3edge"
;end of file
```

**IMPORTANT: DO NOT edit the entire line or adjust the indentation of the line. ONLY edit what's inside the quotation marks.**

6. Save the file, and when prompted, reboot the printer.